

# \$389,900 - 4202, 6 Merganser Drive W, Chestermere

MLS® #A2213532

**\$389,900**

3 Bedroom, 2.00 Bathroom, 878 sqft

Residential on 0.00 Acres

Chelsea\_CH, Chestermere, Alberta

Welcome to Lockwood at Chelsea â€“ a bright and beautiful 3-bedroom, 2-bathroom unit with a HUGE balcony in one of Chestermereâ€™s most popular new communities. Completed with underground parking and an extra storage locker this unit is a great value for comfortable, yet affordable living.

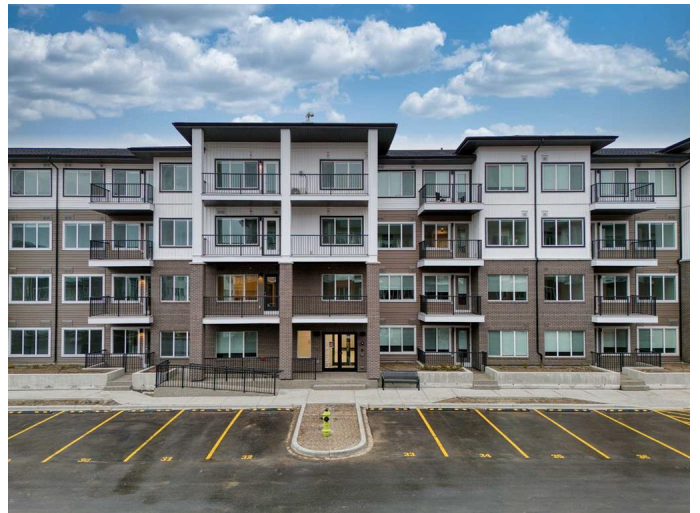
This brand new condo was just completed and is ready for move in immediately. Large size corner unit has a lot of natural light from big windows. Oversized balcony is perfect for relaxing or enjoying time with friends and family.

Step inside to a modern open-concept layout including kitchen with tall cabinets, quartz countertops and stainless steel appliances.. Thereâ€™s also a large island with space for casual dining.

The primary bedroom has its own ensuite bathroom and a walk-through closet, while two more bedrooms and a full bathroom give you lots of space for guests, family, or a home office.

Youâ€™ll also enjoy in-suite laundry, underground titled parking spot, storage locker and access to great building features like a gym, ownersâ€™ lounge, and bike storage. Located just minutes from Chestermere Lake, parks, walking paths, and popular spots like Chestermere Station and Chestermere Crossing, this home is in a fantastic location with everything you need close by.

Whether you're buying your first home, downsizing, or looking for a fresh start, this



move-in-ready condo is the perfect mix of style, comfort, and convenience.  
Call your agent and book a private showing today!

Built in 2025

**Essential Information**

|                |                   |
|----------------|-------------------|
| MLS® #         | A2213532          |
| Price          | \$389,900         |
| Bedrooms       | 3                 |
| Bathrooms      | 2.00              |
| Full Baths     | 2                 |
| Square Footage | 878               |
| Acres          | 0.00              |
| Year Built     | 2025              |
| Type           | Residential       |
| Sub-Type       | Apartment         |
| Style          | Single Level Unit |
| Status         | Active            |

**Community Information**

|             |                           |
|-------------|---------------------------|
| Address     | 4202, 6 Merganser Drive W |
| Subdivision | Chelsea_CH                |
| City        | Chestermere               |
| County      | Chestermere               |
| Province    | Alberta                   |
| Postal Code | T1X 2Y2                   |

**Amenities**

|                |  |
|----------------|--|
| Amenities      | Bicycle Storage, Fitness Center, Park, Snow Removal, Trash, Visitor Parking, Recreation Room |
| Parking Spaces | 1  |
| Parking        | Titled, Underground  |

**Interior**

|                   |   |
|-------------------|---|
| Interior Features | Kitchen Island, Quartz Counters, Vinyl Windows, Walk-In Closet(s)           |
| Appliances        | Dishwasher, Dryer, Electric Stove, Microwave Hood Fan, Refrigerator, Washer |

|              |                      |
|--------------|----------------------|
| Heating      | Baseboard, Hot Water |
| Cooling      | None                 |
| # of Stories | 4                    |

## Exterior

|                   |                              |
|-------------------|------------------------------|
| Exterior Features | Balcony, BBQ gas line        |
| Roof              | Asphalt Shingle              |
| Construction      | Composite Siding, Wood Frame |

## Additional Information

|                |                  |
|----------------|------------------|
| Date Listed    | April 22nd, 2025 |
| Days on Market | 6                |
| Zoning         | M-2              |

## Listing Details

|                |            |
|----------------|------------|
| Listing Office | CIR Realty |
|----------------|------------|

Data is supplied by Pillar 9â„¢ MLS® System. Pillar 9â„¢ is the owner of the copyright in its MLS® System. Data is deemed reliable but is not guaranteed accurate by Pillar 9â„¢. The trademarks MLS®, Multiple Listing Service® and the associated logos are owned by The Canadian Real Estate Association (CREA) and identify the quality of services provided by real estate professionals who are members of CREA. Used under license.