

# \$429,900 - 80 Cambridge Road W, Lethbridge

MLS® #A2212254

**\$429,900**

5 Bedroom, 3.00 Bathroom, 1,287 sqft

Residential on 0.13 Acres

Varsity Village, Lethbridge, Alberta

Check this one out! First time on the market! This one owner home has been loved from the beginning! A bungalow boasting almost 1300 ft.Â² with three bedrooms up and another two down. Makes this a perfect home for family or for revenue! Double attached garage, spacious rooms and so much more make this a winner! Conveniently located just a block off of Nicolas Sharon Park!

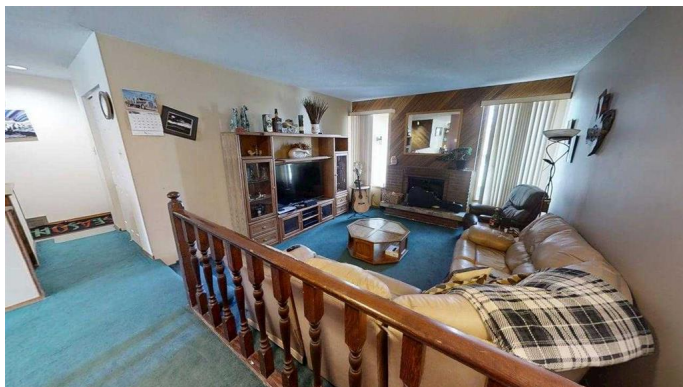
Built in 1978

## Essential Information

MLS® #	A2212254
Price	\$429,900
Bedrooms	5
Bathrooms	3.00
Full Baths	3
Square Footage	1,287
Acres	0.13
Year Built	1978
Type	Residential
Sub-Type	Detached
Style	Bungalow
Status	Active

## Community Information

Address	80 Cambridge Road W
Subdivision	Varsity Village
City	Lethbridge



County	Lethbridge
Province	Alberta
Postal Code	T1K 4V9

### Amenities

Parking Spaces	4
Parking	Double Garage Attached
# of Garages	2

### Interior

Interior Features	See Remarks
Appliances	Dishwasher, Garage Control(s), Refrigerator, Stove(s), Washer/Dryer
Heating	Forced Air
Cooling	None
Fireplace	Yes
# of Fireplaces	1
Fireplaces	Living Room, None
Has Basement	Yes
Basement	Finished, Full

### Exterior

Exterior Features	Other
Lot Description	Back Lane, Back Yard
Roof	Asphalt Shingle
Construction	Concrete
Foundation	Poured Concrete

### Additional Information

Date Listed	April 15th, 2025
Days on Market	4
Zoning	R-L

### Listing Details

Listing Office	Maxwell Capital Realty - Lethbridge
----------------	-------------------------------------

Data is supplied by Pillar 9â„¢ MLSÂ® System. Pillar 9â„¢ is the owner of the copyright in its MLSÂ® System. Data is deemed reliable but is not guaranteed accurate by Pillar 9â„¢. The trademarks MLSÂ®, Multiple Listing ServiceÂ® and the associated logos are owned by The Canadian Real Estate Association (CREA) and identify the quality of services provided by real estate professionals who are members of CREA. Used under license.