

\$953,000 - 29211 Range Road 41, Rural Mountain View County

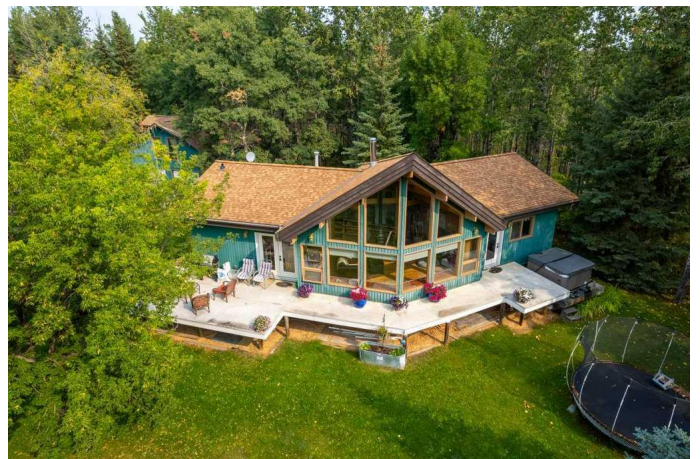
MLS® #A2211895

\$953,000

3 Bedroom, 4.00 Bathroom, 1,328 sqft
Residential on 36.28 Acres

NONE, Rural Mountain View County, Alberta

Check out this Lindel Cedar BUNGALOW on this 36.28 ACRE PARCEL located in a super PRIVATE SETTING with a great mix of TREES. It's a home with tons of CHARACTER & CHARM with 3 Bedrooms, 4 Bathrooms & 2,600 +/- Sq Ft of developed space. This home provides one level living with the primary bedroom on the main floor with access right to the SUNNY SOUTH FACING DECK where you can enjoy the HOT TUB & view. It boasts his & hers closets, a VAULTED CEILING & a 2-piece ensuite. The Living Room has an A Frame Vaulted Ceiling. Large windows offer tons of natural light & a Cozy Antique WOOD STOVE for the cool winter days just adds to its appeal. BRIGHT & UPDATED kitchen/dining area with room for the whole family. The FULLY FINISHED BASEMENT is complete with large windows, 2 bedrooms, a FAMILY/REC ROOM, 2 Piece Bathroom & STORAGE. The North deck offers newer patio doors, Duradeck capping & aluminum railing (~5 years old). Outside, you'll appreciate the 27'x24' Oversized HEATED DOUBLE GARAGE with power & and a BONUS ROOM UPSTAIRS (no bathroom facilities). The 48'x32' QUONSAT features BOX STALLS with mats & feeders & a convenient Camera System linked to a TV in the house to observe your animals. The property is FENCED for horses & is CENTRALLY LOCATED West of Carstairs and Crossfield with easy access to



Cremona and Cochrane. Other Features include Lux Windows, a Dog Run, Quonset with box stalls, insulated, power, asphalt flooring, & exhaust fan. GST is applicable and is not included in the price.

Built in 1990

Essential Information

| | |
|----------------|----------------------------------|
| MLS® # | A2211895 |
| Price | \$953,000 |
| Bedrooms | 3 |
| Bathrooms | 4.00 |
| Full Baths | 2 |
| Half Baths | 2 |
| Square Footage | 1,328 |
| Acres | 36.28 |
| Year Built | 1990 |
| Type | Residential |
| Sub-Type | Detached |
| Style | Bungalow, Acreage with Residence |
| Status | Active |

Community Information

| | |
|-------------|----------------------------|
| Address | 29211 Range Road 41 |
| Subdivision | NONE |
| City | Rural Mountain View County |
| County | Mountain View County |
| Province | Alberta |
| Postal Code | T0M0R0 |

Amenities

| | |
|--------------|--|
| Parking | Double Garage Detached, Heated Garage, Insulated |
| # of Garages | 2 |

Interior

| | |
|-------------------|---|
| Interior Features | Beamed Ceilings, High Ceilings, Open Floorplan, Storage |
| Appliances | Dishwasher, Dryer, Electric Stove, Microwave Hood Fan, Refrigerator, Washer |

| | |
|-----------------|-------------------------------------|
| Heating | Forced Air, Natural Gas, Wood Stove |
| Cooling | None |
| Fireplace | Yes |
| # of Fireplaces | 1 |
| Fireplaces | Wood Burning |
| Has Basement | Yes |
| Basement | Finished, Full |

Exterior

| | |
|-------------------|-------------------------------------|
| Exterior Features | Dog Run, Private Yard, Storage |
| Lot Description | Many Trees, Irregular Lot, Secluded |
| Roof | Asphalt Shingle |
| Construction | Cedar, Wood Siding |
| Foundation | Poured Concrete |

Additional Information

| | |
|----------------|------------------|
| Date Listed | April 18th, 2025 |
| Days on Market | 1 |
| Zoning | Ag |

Listing Details

| | |
|----------------|--------------|
| Listing Office | Quest Realty |
|----------------|--------------|

Data is supplied by Pillar 9â„¢ MLS® System. Pillar 9â„¢ is the owner of the copyright in its MLS® System. Data is deemed reliable but is not guaranteed accurate by Pillar 9â„¢. The trademarks MLS®, Multiple Listing Service® and the associated logos are owned by The Canadian Real Estate Association (CREA) and identify the quality of services provided by real estate professionals who are members of CREA. Used under license.