

# \$249,900 - 224, 103 Strathaven Drive, Strathmore

MLS® #A2211405

**\$249,900**

2 Bedroom, 1.00 Bathroom, 795 sqft

Residential on 0.02 Acres

Strathaven, Strathmore, Alberta

It is well-cared for, has a beautiful two-bedroom close to schools, parks, and the hospital, and is a 3-minute drive away from Walmart, a family-friendly community. It comes with 2 parking stall 1. Right in front And right behind mail box on the West side #224.

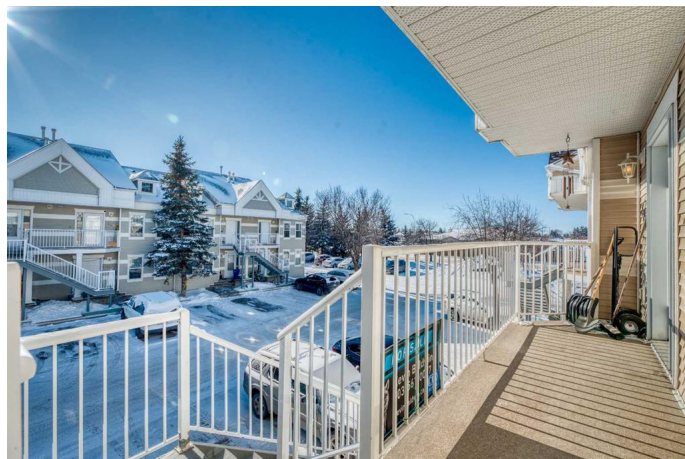
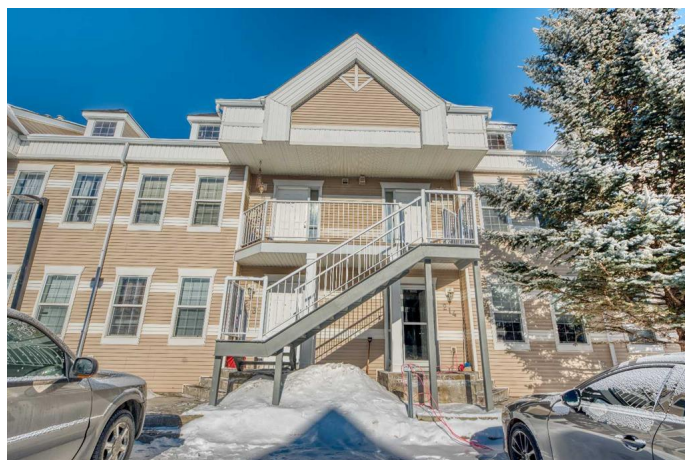
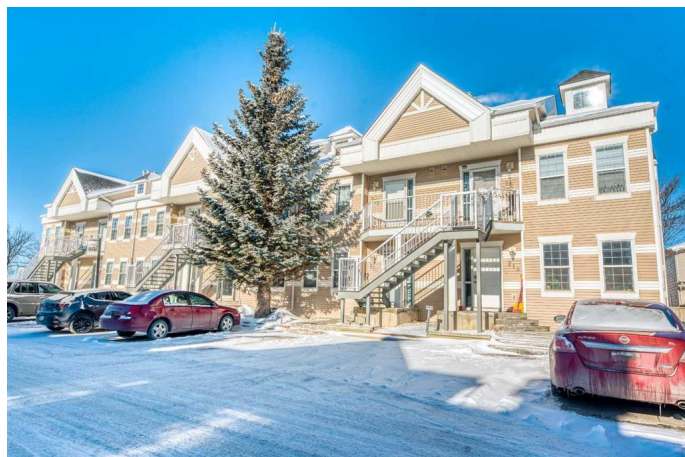
Built in 2001

## Essential Information

MLS® #	A2211405
Price	\$249,900
Bedrooms	2
Bathrooms	1.00
Full Baths	1
Square Footage	795
Acres	0.02
Year Built	2001
Type	Residential
Sub-Type	Row/Townhouse
Style	2 Storey
Status	Active

## Community Information

Address	224, 103 Strathaven Drive
Subdivision	Strathaven
City	Strathmore
County	Wheatland County
Province	Alberta
Postal Code	T1P 1W3



## Amenities

Amenities	None
Parking Spaces	2
Parking	Stall

## Interior

Interior Features	No Smoking Home
Appliances	Dishwasher, Dryer, Refrigerator, Stove(s), Washer
Heating	Forced Air
Cooling	None
Basement	None

## Exterior

Exterior Features	None
Lot Description	Views
Roof	Asphalt Shingle
Construction	Vinyl Siding, Wood Frame
Foundation	Poured Concrete

## Additional Information

Date Listed	April 13th, 2025
Days on Market	7
Zoning	R3
HOA Fees	459
HOA Fees Freq.	ANN

## Listing Details

Listing Office	CIR Realty
----------------	------------

Data is supplied by Pillar 9â„¢ MLS® System. Pillar 9â„¢ is the owner of the copyright in its MLS® System. Data is deemed reliable but is not guaranteed accurate by Pillar 9â„¢. The trademarks MLS®, Multiple Listing Service® and the associated logos are owned by The Canadian Real Estate Association (CREA) and identify the quality of services provided by real estate professionals who are members of CREA. Used under license.