

\$369,900 - 14 Eastpointe Drive, Blackfalds

MLS® #A2206995

\$369,900

3 Bedroom, 2.00 Bathroom, 1,259 sqft

Residential on 0.14 Acres

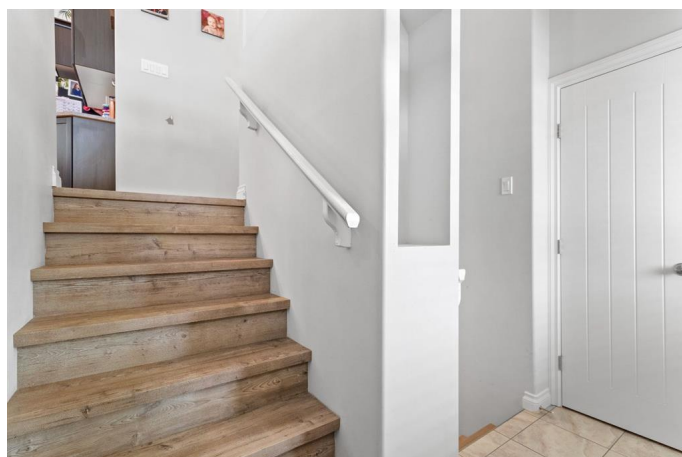
Panorama Estates, Blackfalds, Alberta

This 3-bedroom, 2-bathroom bi-level home in Panorama Estates, Blackfalds, is a great option for families or anyone looking for a solid home in a nice neighborhood. The main level has a spacious living room with plenty of natural light and a kitchen with enough counter space with the centre island and appliances for everyday use. The dining area is right next to the kitchen and opens up to a deck and spacious yard with additional parking. The master bedroom has its own private 4 pc ensuite bathroom, while the other two bedrooms share a full bathroom down the hall. The basement is unfinished and ready for you to make it your own, whether you want more living space, bedrooms and a home office, or a recreation area, it offers plenty of possibilities. Located in a quiet, family-friendly area, this home is close to schools, parks, and shopping, with easy access to main roads for commuting. New fridge and dishwasher in 2023, Hot water tank 2021.

Built in 2011

Essential Information

MLS® #	A2206995
Price	\$369,900
Bedrooms	3
Bathrooms	2.00
Full Baths	2
Square Footage	1,259



Acres	0.14
Year Built	2011
Type	Residential
Sub-Type	Detached
Style	Bi-Level
Status	Active

Community Information

Address	14 Eastpointe Drive
Subdivision	Panorama Estates
City	Blackfalds
County	Lacombe County
Province	Alberta
Postal Code	T4M 0G8

Amenities

Parking	Off Street
---------	------------

Interior

Interior Features	Kitchen Island, Vinyl Windows
Appliances	Dishwasher, Microwave, Refrigerator, Stove(s), Washer/Dryer, Window Coverings
Heating	Forced Air
Cooling	Central Air
Has Basement	Yes
Basement	Full, Unfinished

Exterior

Exterior Features	None
Lot Description	Back Yard
Roof	Asphalt Shingle
Construction	Vinyl Siding
Foundation	Poured Concrete

Additional Information

Date Listed	April 2nd, 2025
Days on Market	14
Zoning	R1M

Listing Details

Listing Office

Royal LePage Network Realty Corp.

Data is supplied by Pillar 9â„¢ MLSÂ® System. Pillar 9â„¢ is the owner of the copyright in its MLSÂ® System. Data is deemed reliable but is not guaranteed accurate by Pillar 9â„¢. The trademarks MLSÂ®, Multiple Listing ServiceÂ® and the associated logos are owned by The Canadian Real Estate Association (CREA) and identify the quality of services provided by real estate professionals who are members of CREA. Used under license.