

\$129,000 - Lot 2 Block 1 Plan 2022675, Rural Grande Prairie No. 1, County of

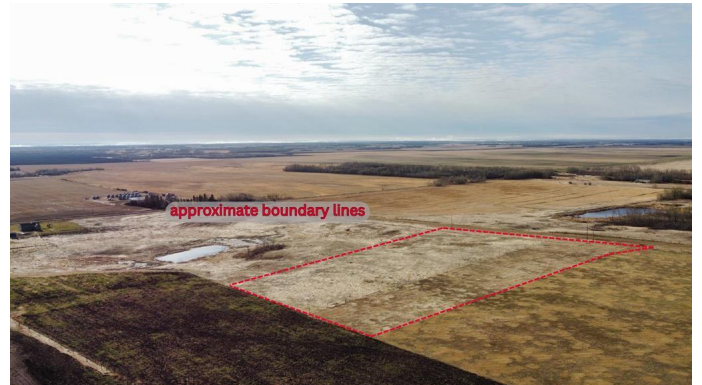
MLS® #A2205476

\$129,000

0 Bedroom, 0.00 Bathroom,
Land on 5.52 Acres

NONE, Rural Grande Prairie No. 1, County of,
Alberta

5.52 acres located in the Klesken Hills, ready for you to develop. Power and gas services are already on the property and this lot was designed to support a pumpout septic system. Zoned CR-5 and located 4 km north of HWY 43 across the road from the Kleskun Hill Natural Area. Take a drive out and have a look or contact your favorite Real Estate Professional for more information.



Essential Information

MLS® #	A2205476
Price	\$129,000
Bathrooms	0.00
Acres	5.52
Type	Land
Sub-Type	Residential Land
Status	Active

Community Information

Address	Lot 2 Block 1 Plan 2022675
Subdivision	NONE
City	Rural Grande Prairie No. 1, County of
County	Grande Prairie No. 1, County of
Province	Alberta
Postal Code	T8X 0X4

Additional Information

Date Listed March 25th, 2025

Days on Market 12

Zoning CR-5

Listing Details

Listing Office Royal LePage - The Realty Group

Data is supplied by Pillar 9â,,ç MLSÂ® System. Pillar 9â,,ç is the owner of the copyright in its MLSÂ® System. Data is deemed reliable but is not guaranteed accurate by Pillar 9â,,ç. The trademarks MLSÂ®, Multiple Listing ServiceÂ® and the associated logos are owned by The Canadian Real Estate Association (CREA) and identify the quality of services provided by real estate professionals who are members of CREA. Used under license.