

\$749,900 - 131 Somerset Court Se, Medicine Hat

MLS® #A2205400

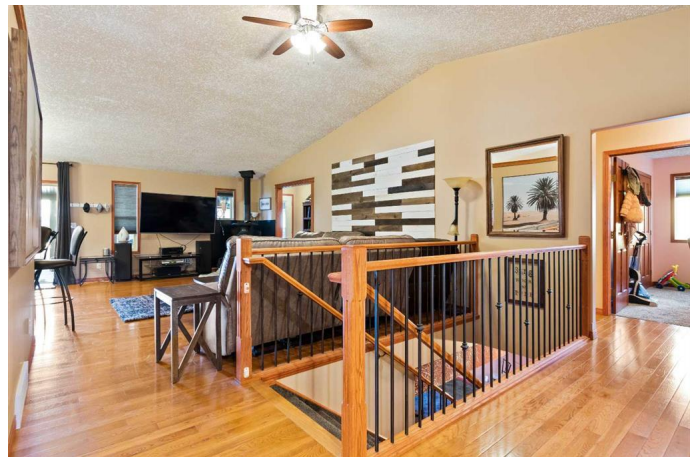
\$749,900

5 Bedroom, 3.00 Bathroom, 2,074 sqft

Residential on 0.23 Acres

Southland, Medicine Hat, Alberta

Step into this incredible bungalow offering over 2000 sq ft on the main floor alone. The spacious primary bedroom is a true retreat—over 300 sq ft with a luxurious 5-piece en-suite, and direct access to the porch, where you can unwind in your own hot tub. The craftsmanship and attention to detail throughout this home are second to none. With 5 bedrooms, 3 full baths, and not one but two double garages, this home offers both comfort and functionality for any lifestyle. This thoughtfully designed main floor offers three spacious bedrooms, perfect for family living or guest accommodations, as well as a dedicated home office ideal for remote work or study. Enjoy the convenience of main floor laundry, an inviting dining area that flows seamlessly from the kitchen—perfect for everyday meals or entertaining. Step out onto the covered back deck, an ideal outdoor retreat complete with a built-in gas line for your BBQ, making summer grilling effortless and enjoyable year-round. Downstairs, the home truly shines as an entertainer's dream. There's ample space for hosting, complete with a large recreation area perfect for a pool table, games, or movie nights. A custom bar adds a touch of luxury and convenience, making it easy to serve drinks and snacks while entertaining guests. Two additional generously sized bedrooms provide comfortable accommodations, and a third full bathroom ensures plenty of space and privacy for family or visitors. This home offers the ultimate in



comfort and convenience with dual-zone heating, ensuring personalized climate control throughout the living spaces. Car enthusiasts and hobbyists will appreciate the heated 28' x 26' attached front garageâ€”perfect for winter monthsâ€”as well as a second 26' x 28' heated garage at the back of the property. The rear garage is fully equipped with a 2-piece bathroom, making it an ideal workshop, man cave, or additional storage space with all the amenities you need. Donâ€™t miss out on this exceptional opportunityâ€”homes like this are rare!

Built in 2012

Essential Information

MLS® #	A2205400
Price	\$749,900
Bedrooms	5
Bathrooms	3.00
Full Baths	3
Square Footage	2,074
Acres	0.23
Year Built	2012
Type	Residential
Sub-Type	Detached
Style	Bungalow
Status	Active

Community Information

Address	131 Somerset Court Se
Subdivision	Southland
City	Medicine Hat
County	Medicine Hat
Province	Alberta
Postal Code	T1B0H1

Amenities

Parking Spaces	7
----------------	---

Parking	Double Garage Attached, Double Garage Detached
# of Garages	4

Interior

Interior Features	Built-in Features, Ceiling Fan(s), Central Vacuum, Double Vanity, Granite Counters, Kitchen Island, Pantry, Vaulted Ceiling(s), Walk-In Closet(s), Wired for Sound, Jetted Tub, Wet Bar
Appliances	Dishwasher, Garburator, Microwave, Range Hood, Refrigerator, Stove(s), Washer/Dryer
Heating	Forced Air, Natural Gas
Cooling	Central Air
Fireplace	Yes
# of Fireplaces	1
Fireplaces	Living Room, Wood Burning
Has Basement	Yes
Basement	Finished, Full

Exterior

Exterior Features	BBQ gas line, Private Yard
Lot Description	Back Lane, Back Yard, Cul-De-Sac, Irregular Lot, Underground Sprinklers, City Lot
Roof	Asphalt Shingle
Construction	Brick, Stucco, ICFs (Insulated Concrete Forms)
Foundation	Poured Concrete

Additional Information

Date Listed	March 24th, 2025
Days on Market	24
Zoning	R-LD

Listing Details

Listing Office	RIVER STREET REAL ESTATE
----------------	--------------------------

Data is supplied by Pillar 9â„¢ MLS® System. Pillar 9â„¢ is the owner of the copyright in its MLS® System. Data is deemed reliable but is not guaranteed accurate by Pillar 9â„¢. The trademarks MLS®, Multiple Listing Service® and the associated logos are owned by The Canadian Real Estate Association (CREA) and identify the quality of services provided by real estate professionals who are members of CREA. Used under license.