

# \$425,000 - 571010 Range Road 100, Rural Woodlands County

MLS® #A2204827

**\$425,000**

2 Bedroom, 1.00 Bathroom, 928 sqft  
Residential on 160.00 Acres

NONE, Rural Woodlands County, Alberta

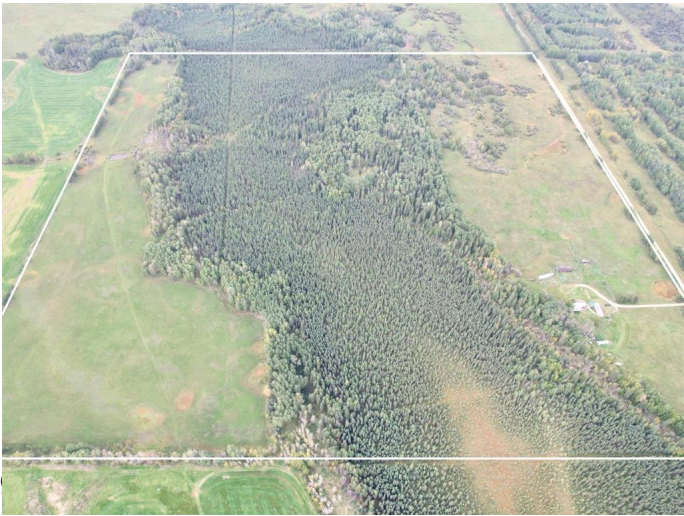
Down a gravel trail, at the end of a dead-end road with no neighbours in sight. This peaceful piece of property includes open meadows, trees, and trails to enjoy. Views to the north. The home was recently renovated and upgraded with fresh colours and flooring. Some dog kennels remain with old barns in the yard. Utilities include power, a well, and a private septic. The hay field is on the back SW portion. Located near Anselmo hall, between Whitecourt and Mayerthorpe.

Built in 1999

## Essential Information

MLS® #	A2204827
Price	\$425,000
Bedrooms	2
Bathrooms	1.00
Full Baths	1
Square Footage	928
Acres	160.00
Year Built	1999
Type	Residential
Sub-Type	Detached
Style	Acreage with Residence, Single
Status	Active

## Community Information



Address	571010 Range Road 100
Subdivision	NONE
City	Rural Woodlands County
County	Woodlands County
Province	Alberta
Postal Code	T0E 1N0

### **Amenities**

Utilities	Electricity Connected, Propane
Parking Spaces	100
Parking	Off Street, Gravel Driveway

### **Interior**

Interior Features	Built-in Features, Ceiling Fan(s)
Appliances	Dryer, Electric Stove, Refrigerator, Washer
Heating	Forced Air, Propane
Cooling	None
Basement	None

### **Exterior**

Exterior Features	Lighting, Private Yard, Storage, Dog Run, Kennel
Lot Description	Back Yard, Cul-De-Sac, Front Yard, Lawn, Private, Yard Lights
Roof	Asphalt Shingle
Construction	Mixed
Foundation	Piling(s)

### **Additional Information**

Date Listed	March 23rd, 2025
Days on Market	29
Zoning	Agricultural

### **Listing Details**

Listing Office	ROYAL LEPAGE MODERN REALTY
----------------	----------------------------

Data is supplied by Pillar 9â„¢ MLS® System. Pillar 9â„¢ is the owner of the copyright in its MLS® System. Data is deemed reliable but is not guaranteed accurate by Pillar 9â„¢. The trademarks MLS®, Multiple Listing Service® and the associated logos are owned by The Canadian Real Estate Association (CREA) and identify the quality of services provided by real estate professionals who are members of CREA. Used under license.