

\$459,900 - 102 Lasalle Terrace W, Lethbridge

MLS® #A2204763

\$459,900

4 Bedroom, 3.00 Bathroom, 944 sqft

Residential on 0.10 Acres

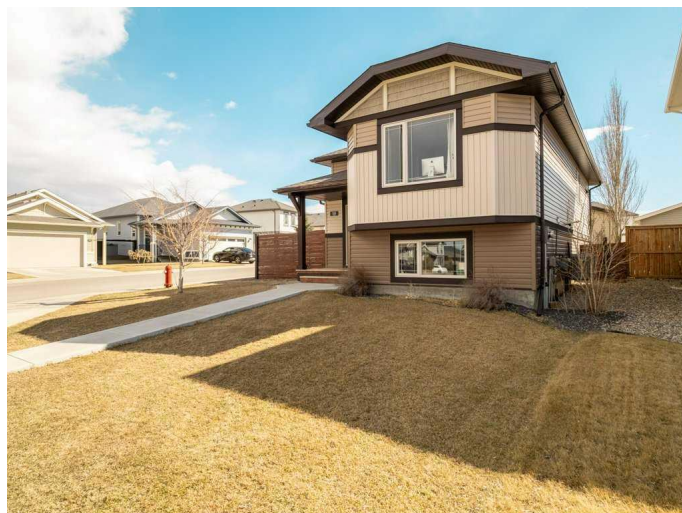
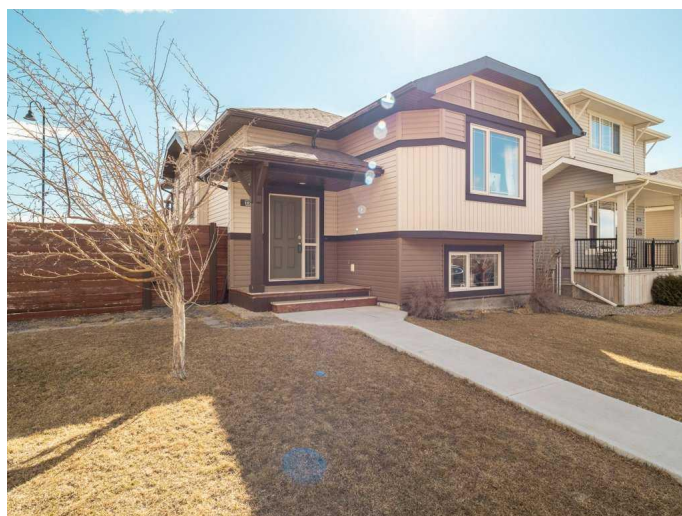
Garry Station, Lethbridge, Alberta

Discover the perfect blend of comfort and style in this stunning bi-level home, featuring 4 spacious bedrooms and 3 full bathrooms. Designed for both relaxation and entertaining, this home boasts a beautiful deck overlooking a private backyardâ€”ideal for summer gatherings. The primary bedroom offers the luxury of an ensuite and a double closet for added convenience. The bright and airy basement is filled with natural light, creating a warm and inviting space. Plus, the heated double detached garage ensures year-round comfort and storage. Also worth noticing that the flooring in the upstairs bedrooms and basement was upgraded in 2022 to a thick high quality laminate. This home is a must-seeâ€”add it to your list of favorites today!

Built in 2013

Essential Information

| | |
|----------------|-------------|
| MLS® # | A2204763 |
| Price | \$459,900 |
| Bedrooms | 4 |
| Bathrooms | 3.00 |
| Full Baths | 3 |
| Square Footage | 944 |
| Acres | 0.10 |
| Year Built | 2013 |
| Type | Residential |



| | |
|----------|----------|
| Sub-Type | Detached |
| Style | Bi-Level |
| Status | Active |

Community Information

| | |
|-------------|-----------------------|
| Address | 102 Lasalle Terrace W |
| Subdivision | Garry Station |
| City | Lethbridge |
| County | Lethbridge |
| Province | Alberta |
| Postal Code | T1J 5H1 |

Amenities

| | |
|----------------|------------------------|
| Parking Spaces | 2 |
| Parking | Double Garage Detached |
| # of Garages | 2 |

Interior

| | |
|-------------------|---|
| Interior Features | Open Floorplan |
| Appliances | Dishwasher, Dryer, Freezer, Microwave, Microwave Hood Fan, Washer |
| Heating | Forced Air |
| Cooling | Central Air |
| Has Basement | Yes |
| Basement | Finished, Full |

Exterior

| | |
|-------------------|------------------------------------|
| Exterior Features | Private Yard |
| Lot Description | Back Lane, Back Yard, Corner Lot |
| Roof | Asphalt Shingle |
| Construction | Concrete, Vinyl Siding, Wood Frame |
| Foundation | Poured Concrete |

Additional Information

| | |
|----------------|------------------|
| Date Listed | March 25th, 2025 |
| Days on Market | 27 |
| Zoning | R-CL |

Listing Details

| | |
|----------------|------------------|
| Listing Office | 2 PERCENT REALTY |
|----------------|------------------|

Data is supplied by Pillar 9â„¢ MLS® System. Pillar 9â„¢ is the owner of the copyright in its MLS® System. Data is deemed reliable but is not guaranteed accurate by Pillar 9â„¢. The trademarks MLS®, Multiple Listing Service® and the associated logos are owned by The Canadian Real Estate Association (CREA) and identify the quality of services provided by real estate professionals who are members of CREA. Used under license.