

\$459,000 - 4208 Township Road 354, Rural Red Deer County

MLS® #A2202458

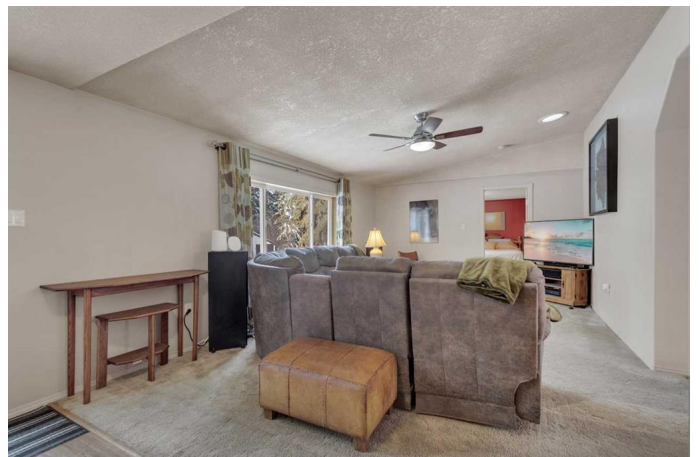
\$459,000

5 Bedroom, 2.00 Bathroom, 1,624 sqft
Residential on 3.43 Acres

NONE, Rural Red Deer County, Alberta

Surrounded by nature and soaring spruce trees this landscaped acreage offers exceptional privacy! Located minutes to the Kevisville Community Center / Church, 15 minutes to Spruce View (K-12 school, Restaurant, Grocery Store, Hardware Store and Gas Bar) and Glennifer Lake! This cute acreage boasts privacy, seclusion and country living. The 1992 modular is situated on a newer poured concrete foundation with loads of space for the whole family! The upstairs offers a spacious open floorplan, vaulted ceiling, large kitchen, roomy living room, main floor laundry, large primary bedroom with walk in closet and 4 pc ensuite, 2 additional bedrooms and 4pc bath. The basement has 2 finished bedrooms, large craft room, storage room, spacious family room and awaits your finishing touch. It also features roughed-in infloor heat, new water softener, iron removal system and air exchanger. A rear back porch leads to a newer 2 tiered deck (posts already installed for future covered deck), overlooking the landscaped yard and pond. Updates to the property include shingles, laminate flooring, water softener, iron removal system, solatubes (offering additional natural light), kitchen faucet, generator hard wired that also runs the furnace, some drywall on main level and deck!

Built in 1992



Essential Information

| | |
|----------------|---|
| MLS® # | A2202458 |
| Price | \$459,000 |
| Bedrooms | 5 |
| Bathrooms | 2.00 |
| Full Baths | 2 |
| Square Footage | 1,624 |
| Acres | 3.43 |
| Year Built | 1992 |
| Type | Residential |
| Sub-Type | Detached |
| Style | Acreage with Residence, Double Wide Mobile Home |
| Status | Active |

Community Information

| | |
|-------------|------------------------|
| Address | 4208 Township Road 354 |
| Subdivision | NONE |
| City | Rural Red Deer County |
| County | Red Deer County |
| Province | Alberta |
| Postal Code | T4G 0L6 |

Amenities

| | |
|---------|-----------------------|
| Parking | Driveway, Parking Pad |
|---------|-----------------------|

Interior

| | |
|-------------------|--|
| Interior Features | Ceiling Fan(s), Closet Organizers, Separate Entrance, Soaking Tub, Solar Tube(s), Storage, Vaulted Ceiling(s), Vinyl Windows, Sump Pump(s), Track Lighting |
| Appliances | Dishwasher, Electric Oven, Range Hood, Refrigerator, Washer/Dryer Stacked, Water Softener, Window Coverings |
| Heating | Floor Furnace, In Floor Roughed-In, Propane |
| Cooling | None |
| Has Basement | Yes |
| Basement | Full, Partially Finished |

Exterior

| | |
|-------------------|---------------------------------|
| Exterior Features | Fire Pit, Private Yard, Storage |
| Lot Description | Many Trees, Treed, Private |

| | |
|--------------|--------------|
| Roof | Asphalt |
| Construction | Vinyl Siding |
| Foundation | Wood |

Additional Information

| | |
|----------------|------------------|
| Date Listed | March 17th, 2025 |
| Days on Market | 34 |
| Zoning | AG |

Listing Details

| | |
|----------------|--------------------------------|
| Listing Office | Coldwell Banker Ontrack Realty |
|----------------|--------------------------------|

Data is supplied by Pillar 9â„¢ MLSÂ® System. Pillar 9â„¢ is the owner of the copyright in its MLSÂ® System. Data is deemed reliable but is not guaranteed accurate by Pillar 9â„¢. The trademarks MLSÂ®, Multiple Listing ServiceÂ® and the associated logos are owned by The Canadian Real Estate Association (CREA) and identify the quality of services provided by real estate professionals who are members of CREA. Used under license.