

# \$1,499,900 - 38268 Range Road 283, Rural Red Deer County

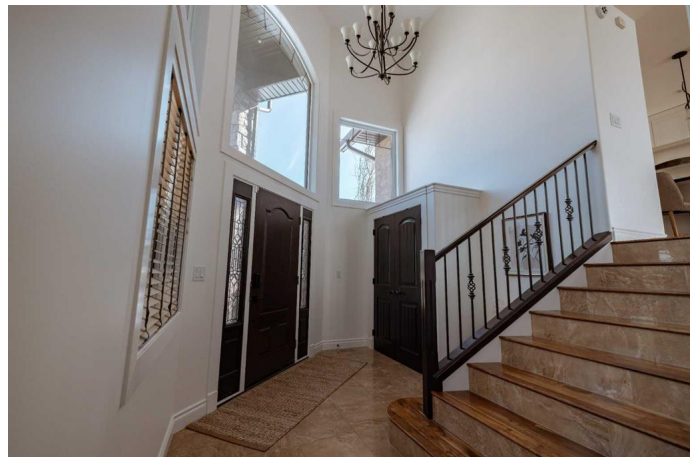
MLS® #A2202230

**\$1,499,900**

4 Bedroom, 6.00 Bathroom, 3,622 sqft  
Residential on 2.99 Acres

NONE, Rural Red Deer County, Alberta

EXCLUSIVE COUNTRY ESTATE JUST MINUTES WEST OF RED DEER & EAST OF SYLVAN ON PAVEMENT ~ 2.99 LANDSCAPED ACRES W/PRIVATE GATED ENTRANCE ~ CUSTOM DESIGNED HOME W/OVER 3,600 SQ. FT. OF GRADE LIVING SPACE & A FULLY DEVELOPED WALKOUT BASEMENT ~ Grand foyer with tile flooring & high ceilings accented with a chandelier welcomes you ~ Open-concept layout, high ceilings, and hardwood flooring ~ The stunning kitchen is a chef's dream; loaded with ceiling-height custom cabinets, ample stone counter space, including a massive island with an eating bar, full tile backsplash, upgraded appliances, and a walk-in pantry ~ The breakfast nook is flooded with natural light and offers two sets of garden doors leading to the wrap-around deck with unobstructed views and a BBQ gas line ~ The living room features 20' high ceilings, floor-to-ceiling windows with more great views, & a double-sided gas fireplace with stone accents shared with the formal dining room ~ French doors lead to the main floor home office conveniently located next to a 2-piece powder room ~ Open staircase overlooks the foyer and leads to the upper-level landing with French doors leading to the primary bedroom oasis with vaulted ceilings, a stone-faced fireplace, oversized walk-in closet, plenty of room for a king-size bed and a sitting area, and garden door



access to a covered east-facing balcony ~ The 5-piece ensuite bathroom has heated tile floors, stone vanity with dual sinks, a corner jetted tub, walk-in shower, and a water closet ~ Just off the primary bedroom is the laundry room with built-in cabinets and a sink ~ The top floor has a sizeable bonus room with an adjoining office nook ~ Two bedrooms located on this level are both a generous size, have walk-in closets, and 4-piece ensuites ~ Home gym with cork flooring & a wall of mirrors ~ The fully developed walkout basement has large above-grade windows and high ceilings ~ A massive family room with floor-to-ceiling windows has a sitting area with a fireplace, recessed lighting, and room for a pool table ~ The bar area has built-in cabinets, a sink, dishwasher, ample counter space with a raised bar, large windows, and garden door access to the lower covered patio and backyard ~ French doors lead to the oversized theatre room with tiered flooring for optimal viewing and tray ceilings with accent lighting ~ 4th bedroom with a large walk-in closet is located next to a 3-piece bathroom with a walk-in steam shower ~ Other great features include; central air conditioning, reverse osmosis, water softener, sunset & sunrise views ~ Spacious mudroom with access to the garage, built-in benches, lockers, 2-piece bathroom, and more closet space ~ Triple garage is heated & has three overhead doors plus tons of paved parking space outside ~ 2.99 acres is landscaped with well-established trees, shrubs, and perennials and has a large shed ~ Close to Red Deer & Sylvan Lake with pavement to the front door, close to Alberta Springs Golf Resort & Poplar Ridge School

Built in 2009

## **Essential Information**

MLS® #

A2202230

Price	\$1,499,900
Bedrooms	4
Bathrooms	6.00
Full Baths	4
Half Baths	2
Square Footage	3,622
Acres	2.99
Year Built	2009
Type	Residential
Sub-Type	Detached
Style	2 Storey, Acreage with Residence
Status	Active

### Community Information

Address	38268 Range Road 283
Subdivision	NONE
City	Rural Red Deer County
County	Red Deer County
Province	Alberta
Postal Code	T4E 1Z5

### Amenities

Utilities	Electricity Connected, Natural Gas Connected
Parking Spaces	9
Parking	Concrete Driveway, Insulated, Parking Pad, RV Access/Parking, Triple Garage Attached, Additional Parking, Front Drive, Gated, Garage Door Opener, Garage Faces Front, Heated Garage, Oversized, Plug-In
# of Garages	3

### Interior

Interior Features	Breakfast Bar, Built-in Features, Ceiling Fan(s), Central Vacuum, Closet Organizers, Double Vanity, French Door, High Ceilings, Jetted Tub, Kitchen Island, Open Floorplan, Pantry, Recessed Lighting, Recreation Facilities, See Remarks, Separate Entrance, Soaking Tub, Stone Counters, Storage, Vinyl Windows, Walk-In Closet(s), Wet Bar, Bookcases, Chandelier, Crown Molding, Tray Ceiling(s), Vaulted Ceiling(s), Wired for Sound
Appliances	Central Air Conditioner, Dishwasher, Garage Control(s), Microwave, Refrigerator, Stove(s), Washer/Dryer, Window Coverings, Wine Refrigerator, See Remarks

Heating	In Floor, Forced Air, Natural Gas, In Floor Roughed-In
Cooling	Central Air
Fireplace	Yes
# of Fireplaces	3
Fireplaces	Family Room, Gas, Dining Room, Double Sided, Great Room, Mantle, Master Bedroom, See Remarks, Stone
Has Basement	Yes
Basement	Exterior Entry, Finished, Full, Walk-Out

## Exterior

Exterior Features	BBQ gas line, Private Entrance, Private Yard, Storage
Lot Description	Back Yard, Front Yard, Landscaped, Level, No Neighbours Behind, See Remarks, Treed, Views
Roof	Asphalt Shingle
Construction	Stucco
Foundation	Poured Concrete

## Additional Information

Date Listed	March 27th, 2025
Days on Market	27
Zoning	R-1

## Listing Details

Listing Office	Lime Green Realty Inc.
----------------	------------------------

Data is supplied by Pillar 9â„¢ MLSÂ® System. Pillar 9â„¢ is the owner of the copyright in its MLSÂ® System. Data is deemed reliable but is not guaranteed accurate by Pillar 9â„¢. The trademarks MLSÂ®, Multiple Listing ServiceÂ® and the associated logos are owned by The Canadian Real Estate Association (CREA) and identify the quality of services provided by real estate professionals who are members of CREA. Used under license.