

\$89,900 - Nw 14 65 17 4, Rural Athabasca County

MLS® #A2201715

\$89,900

0 Bedroom, 0.00 Bathroom,
Land on 15.62 Acres

NONE, Rural Athabasca County, Alberta

15.62 ACRES- Vacant land. Partially fenced.
2/3 treed, front section open, gated entrance.
Great for a hobby farm, hay yard or just a get
away place to set up camp or build your dream
home.

Essential Information

MLS® #	A2201715
Price	\$89,900
Bathrooms	0.00
Acres	15.62
Type	Land
Sub-Type	Residential Land
Status	Active

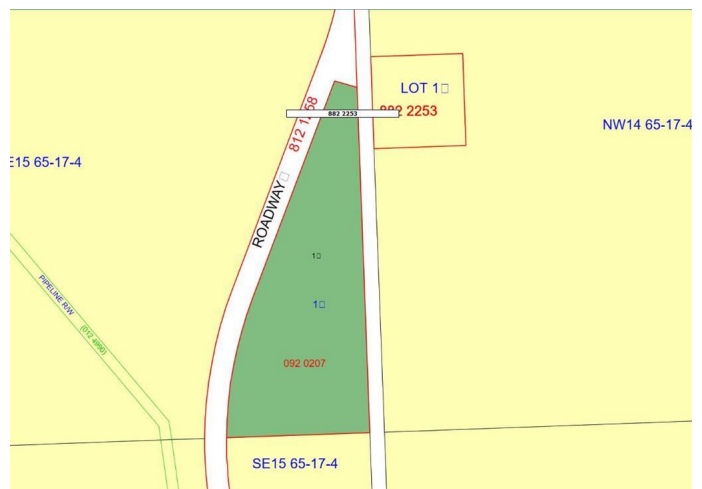
Community Information

Address	Nw 14 65 17 4
Subdivision	NONE
City	Rural Athabasca County
County	Athabasca County
Province	Alberta
Postal Code	T0A0M0

Additional Information

Date Listed	March 11th, 2025
Days on Market	27
Zoning	RES

Listing Details



Listing Office

RE/MAX Connect

Data is supplied by Pillar 9â„¸ MLSÂ® System. Pillar 9â„¸ is the owner of the copyright in its MLSÂ® System. Data is deemed reliable but is not guaranteed accurate by Pillar 9â„¸. The trademarks MLSÂ®, Multiple Listing ServiceÂ® and the associated logos are owned by The Canadian Real Estate Association (CREA) and identify the quality of services provided by real estate professionals who are members of CREA. Used under license.