

# \$85,000 - 23, 6220 17 Avenue, Calgary

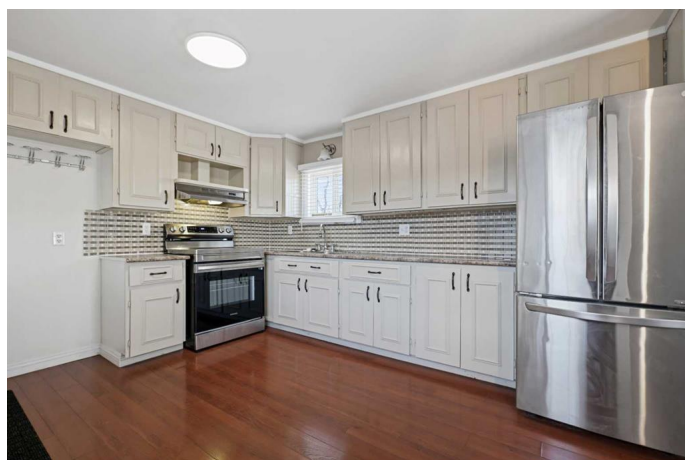
MLS® #A2199347

## \$85,000

3 Bedroom, 1.00 Bathroom, 904 sqft  
Mobile on 0.00 Acres

Penbrooke Meadows, Calgary, Alberta

Discover affordable living at its finest! This charming single-wide home has been beautifully updated, featuring stylish brown vinyl plank flooring throughout and fresh paint. The bright kitchen is equipped with a stainless steel fridge and stove. The laundry room has a washer & dryer set included as well. The exterior boasts low-maintenance vinyl siding and a durable asphalt roof. Double-pane vinyl windows provide added comfort. Conveniently located just a short walk from the clubhouse, which offers a community gathering area with a kitchen, a modern exercise room, an 8-ball pool table, a games room, as well as a playground and BBQ area. Calgary Village is a peaceful, family-friendly community.



## Essential Information

MLS® #	A2199347
Price	\$85,000
Bedrooms	3
Bathrooms	1.00
Full Baths	1
Square Footage	904
Acres	0.00
Type	Mobile
Sub-Type	Mobile
Style	Single Wide Mobile Home
Status	Active

## Community Information

Address	23, 6220 17 Avenue
Subdivision	Penbrooke Meadows
City	Calgary
County	Calgary
Province	Alberta
Postal Code	T2A0W6

### **Amenities**

Parking Spaces	2
Parking	Off Street, Parking Pad

### **Interior**

Appliances	Built-In Oven, Built-In Refrigerator
Heating	Forced Air

### **Exterior**

Roof	Asphalt
------	---------

### **Additional Information**

Date Listed	March 4th, 2025
Days on Market	9

### **Listing Details**

Listing Office	eXp Realty
----------------	------------

Data is supplied by Pillar 9â„¢ MLSÂ® System. Pillar 9â„¢ is the owner of the copyright in its MLSÂ® System. Data is deemed reliable but is not guaranteed accurate by Pillar 9â„¢. The trademarks MLSÂ®, Multiple Listing ServiceÂ® and the associated logos are owned by The Canadian Real Estate Association (CREA) and identify the quality of services provided by real estate professionals who are members of CREA. Used under license.