

\$575,000 - 1025 West Lakeview Drive, Chestermere

MLS® #A2199207

\$575,000

3 Bedroom, 3.00 Bathroom, 1,631 sqft
Residential on 0.07 Acres

Chelsea_CH, Chestermere, Alberta

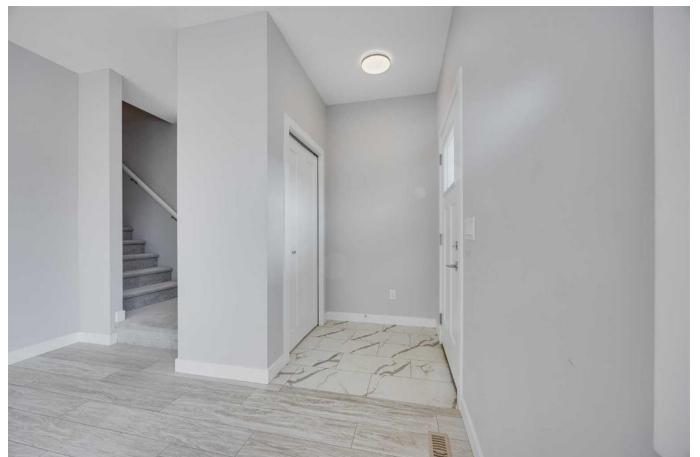
OPEN HOUSE MARCH 15 & 16 from 11-1pm!
Incredible Investment Opportunity in Chelsea,
Chestermere!

Welcome to this exceptional investment opportunity! Purchase one unit or buy both (next door is available for purchase) for maximum potential! Live in one side and rent out the other, or add basement suites to create up to four income-generating doors.

This brand-new 2024-built duplex features 3 bedrooms + bonus room, 2.5 bathrooms, and is located in the new and growing community of Chelsea in Chestermere.

Step inside to a modern kitchen, perfect for cooking and entertaining, complete with a oversized island, sleek quartz countertops, and stylish cabinetry. Upstairs, the spacious primary bedroom boasts a private ensuite, while two additional bedrooms, a full bath, and a bonus room with upstairs laundry provide comfort and convenience for the family.

The unfinished basement with a separate side entrance offers incredible potential for future development! Whether for additional living space or a rental suite (subject to approval and permitting by the city). Plus, the poured parking pad is already in place for a future garage, making this home a fantastic investment.



Prime location: Just minutes from Chestermere Lake, 3 minutes to Costco, Homesense, Starbucks and more , and 20 minutes to downtown Calgary, this family-friendly neighborhood offers breathtaking mountain views when you look to the right of your front door.

Don't miss this incredible opportunity—whether you're an investor or a future homeowner, this property is a smart buy!

Contact us today for more details or to schedule a viewing!

Built in 2024

Essential Information

MLS® #	A2199207
Price	\$575,000
Bedrooms	3
Bathrooms	3.00
Full Baths	2
Half Baths	1
Square Footage	1,631
Acres	0.07
Year Built	2024
Type	Residential
Sub-Type	Semi Detached
Style	2 Storey, Side by Side
Status	Active

Community Information

Address	1025 West Lakeview Drive
Subdivision	Chelsea_CH
City	Chestermere
County	Chestermere
Province	Alberta
Postal Code	T1X 2T2

Amenities

Parking Spaces 2
Parking Parking Pad

Interior

Interior Features Quartz Counters, Walk-In Closet(s)
Appliances Dishwasher, Electric Stove, Microwave Hood Fan, Refrigerator, Washer/Dryer
Heating Forced Air
Cooling None
Has Basement Yes
Basement See Remarks, Unfinished

Exterior

Exterior Features Other, Private Yard
Lot Description Back Lane, Back Yard, Front Yard
Roof Asphalt Shingle
Construction Stone, Vinyl Siding
Foundation Poured Concrete

Additional Information

Date Listed March 5th, 2025
Days on Market 9
Zoning R-3

Listing Details

Listing Office The Real Estate District

Data is supplied by Pillar 9â„¢ MLSÂ® System. Pillar 9â„¢ is the owner of the copyright in its MLSÂ® System. Data is deemed reliable but is not guaranteed accurate by Pillar 9â„¢. The trademarks MLSÂ®, Multiple Listing ServiceÂ® and the associated logos are owned by The Canadian Real Estate Association (CREA) and identify the quality of services provided by real estate professionals who are members of CREA. Used under license.