

\$1,421,000 - 22, 712028 Range Road 51, Rural Grande Prairie No. 1, County of

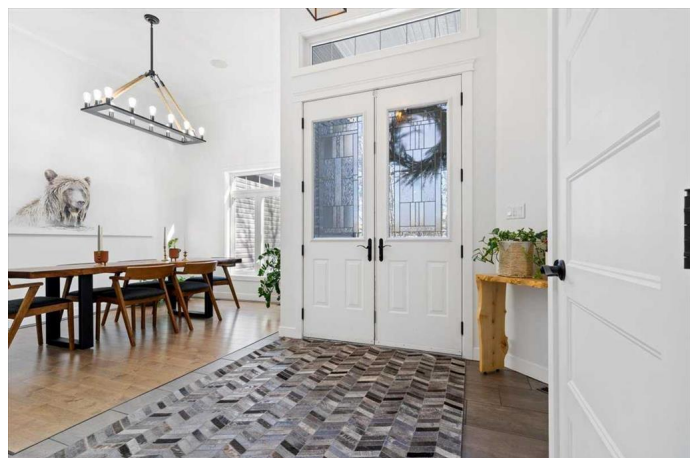
MLS® #A2199168

\$1,421,000

6 Bedroom, 8.00 Bathroom, 2,643 sqft
Residential on 3.02 Acres

Autumn Wood Estates., Rural Grande Prairie
No. 1, County of, Alberta

Need a little more space? Well, this property has room in abundance! Situated on 3 beautifully treed acres in the Autumn Wood subdivision, just minutes east of Grande Prairie, is this amazing home with over 5,000 sq.ft of developed living space boasting 6 spacious bedrooms, 5 washrooms, a open common living space and features too numerous to list. Additionally, the attached garage is split in two with the 25x26 primary section finished with a half bath and plenty of space for your vehicles while the second 20x32 section has its own thermostat for heating, a/c unit and plumbing hookups. What was once a home bakery has now been converted into an extra suite for the in-laws, but could also be used as an office, home gym, workshop, or whatever you can imagine. And if that is not enough, there is a whole second 42x44 garage with RV bay and an 800sq.ft. carriage house with a studio apartment. There is certainly enough space at this property for the whole family, and then some. No expense was spared in the development of this property. From the stamped concrete apron around the home and garage to the in-floor heating throughout every inch of floor in the house, garages and suite. From the massive kitchen island with stone countertops to the Viking fridge with cabinet front and the Viking 6 burner range & double



gas oven. From the primary bedroom with corner fireplace, amazing closet and a full 6 piece ensuite to the 2 jack and jill bathrooms that service 4 bedrooms making bedtime and morning prep a breeze for the kids. And the list goes on and on. This really is a home you will need to see in person to truly appreciate. Contact your favorite Real Estate Professional to book your own private walkthrough today.

Built in 2012

Essential Information

MLS® #	A2199168
Price	\$1,421,000
Bedrooms	6
Bathrooms	8.00
Full Baths	4
Half Baths	4
Square Footage	2,643
Acres	3.02
Year Built	2012
Type	Residential
Sub-Type	Detached
Style	Acreage with Residence, Bungalow
Status	Active

Community Information

Address	22, 712028 Range Road 51
Subdivision	Autumn Wood Estates.
City	Rural Grande Prairie No. 1, County of
County	Grande Prairie No. 1, County of
Province	Alberta
Postal Code	T8X 4A4

Amenities

Parking	Driveway, Garage Door Opener, Heated Garage, Insulated, Oversized, Quad or More Attached, Quad or More Detached, Asphalt, Electric Gate
# of Garages	8

Interior

Interior Features	Built-in Features, Ceiling Fan(s), Central Vacuum, Closet Organizers, Double Vanity, Granite Counters, High Ceilings, Jetted Tub, Kitchen Island, Open Floorplan, Pantry, Recessed Lighting, Storage, Sump Pump(s), Vinyl Windows, Walk-In Closet(s), Wet Bar, Wired for Sound
Appliances	Central Air Conditioner, Dishwasher, Double Oven, Garage Control(s), Gas Stove, Microwave, Range Hood, Refrigerator, Washer/Dryer, Window Coverings, Wine Refrigerator
Heating	Boiler, High Efficiency, In Floor, Fireplace(s), Natural Gas
Cooling	Central Air
Fireplace	Yes
# of Fireplaces	2
Fireplaces	Gas
Has Basement	Yes
Basement	Finished, Full

Exterior

Exterior Features	Fire Pit, Garden, Lighting, Private Yard, Rain Gutters, Storage
Lot Description	Back Yard, Front Yard, Landscaped, Lawn, Many Trees
Roof	Asphalt Shingle
Construction	Stone, Vinyl Siding, Wood Frame
Foundation	Poured Concrete

Additional Information

Date Listed	March 11th, 2025
Days on Market	44
Zoning	CR-2

Listing Details

Listing Office	Royal LePage - The Realty Group
----------------	---------------------------------

Data is supplied by Pillar 9â„¢ MLS® System. Pillar 9â„¢ is the owner of the copyright in its MLS® System. Data is deemed reliable but is not guaranteed accurate by Pillar 9â„¢. The trademarks MLS®, Multiple Listing Service® and the associated logos are owned by The Canadian Real Estate Association (CREA) and identify the quality of services provided by real estate professionals who are members of CREA. Used under license.