

\$439,900 - 16 Souch Bay Se, Medicine Hat

MLS® #A2198860

\$439,900

4 Bedroom, 3.00 Bathroom, 1,279 sqft
Residential on 0.15 Acres

SE Southridge, Medicine Hat, Alberta

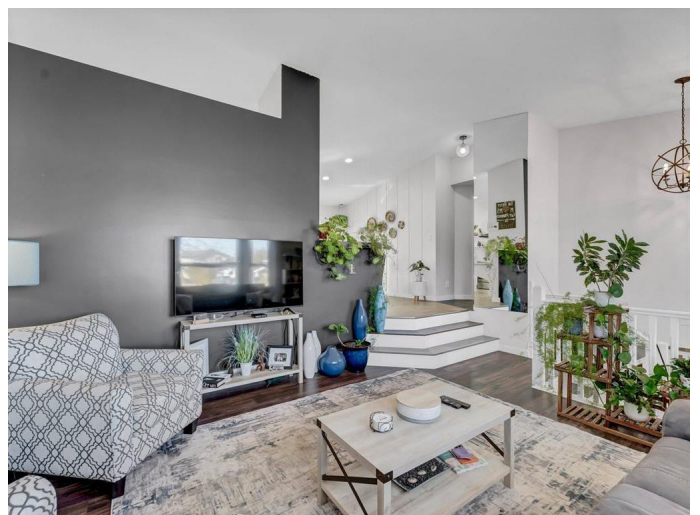
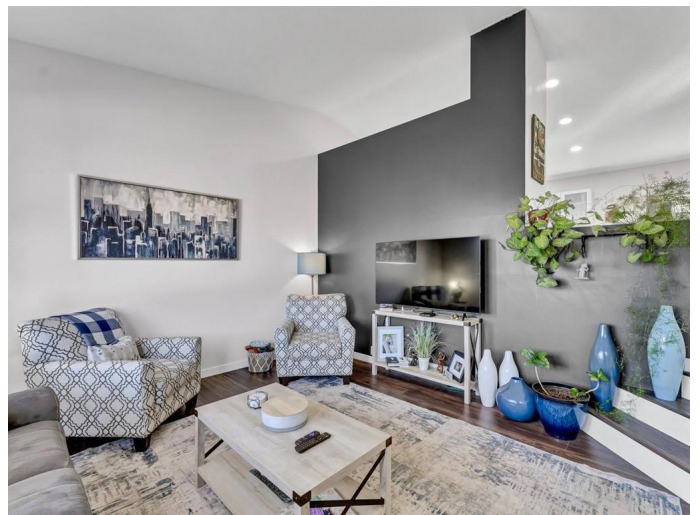
Beautiful home in a great area. Continuously upgraded, this home is situated in a quiet cul de sac. Nice open design with high ceilings and spacious rooms throughout. Big bright kitchen with an island and dining area which makes it easy to host family dinners. Large master bedroom with ensuite, Downstairs boasts a massive family room with fireplace and even has an outside basement entry. Another special feature is an enclosed deck, fully landscaped and fenced yard with underground sprinklers. Book your viewing today.

Built in 1990

Essential Information

MLS® #	A2198860
Price	\$439,900
Bedrooms	4
Bathrooms	3.00
Full Baths	3
Square Footage	1,279
Acres	0.15
Year Built	1990
Type	Residential
Sub-Type	Detached
Style	Bi-Level
Status	Active

Community Information



Address	16 Souch Bay Se
Subdivision	SE Southridge
City	Medicine Hat
County	Medicine Hat
Province	Alberta
Postal Code	T1B4A8

Amenities

Parking Spaces	5
Parking	Double Garage Attached
# of Garages	2

Interior

Interior Features	Closet Organizers, High Ceilings
Appliances	Central Air Conditioner, Dishwasher, Garage Control(s), Refrigerator, Stove(s), Washer/Dryer, Window Coverings
Heating	Forced Air
Cooling	Central Air
Fireplace	Yes
# of Fireplaces	1
Fireplaces	Gas
Has Basement	Yes
Basement	Finished, Full

Exterior

Exterior Features	Private Yard
Lot Description	Back Lane, Landscaped, Cul-De-Sac, Irregular Lot
Roof	Asphalt Shingle
Construction	Mixed
Foundation	Poured Concrete

Additional Information

Date Listed	March 3rd, 2025
Days on Market	9
Zoning	R-LD

Listing Details

Listing Office	ROYAL LEPAGE COMMUNITY REALTY
----------------	-------------------------------

Data is supplied by Pillar 9â„¢ MLSÂ® System. Pillar 9â„¢ is the owner of the copyright in its MLSÂ® System. Data is

deemed reliable but is not guaranteed accurate by Pillar 9â„¸. The trademarks MLSÂ®, Multiple Listing ServiceÂ® and the associated logos are owned by The Canadian Real Estate Association (CREA) and identify the quality of services provided by real estate professionals who are members of CREA. Used under license.