

\$479,000 - 1142 Pacific Circle W, Lethbridge

MLS® #A2198393

\$479,000

3 Bedroom, 3.00 Bathroom, 1,336 sqft
Residential on 0.09 Acres

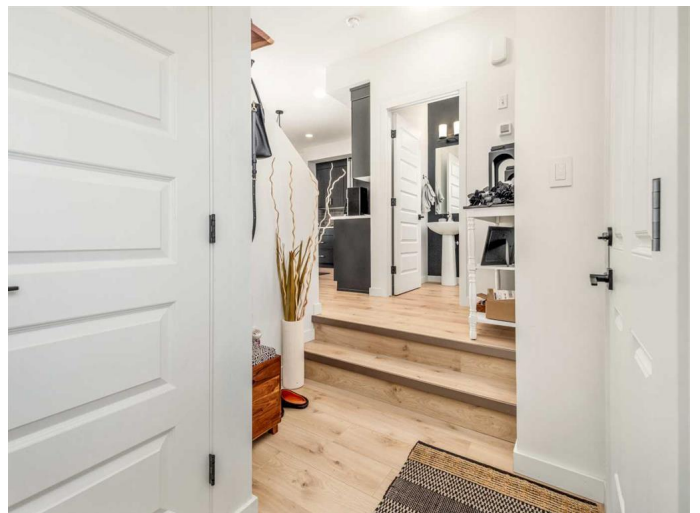
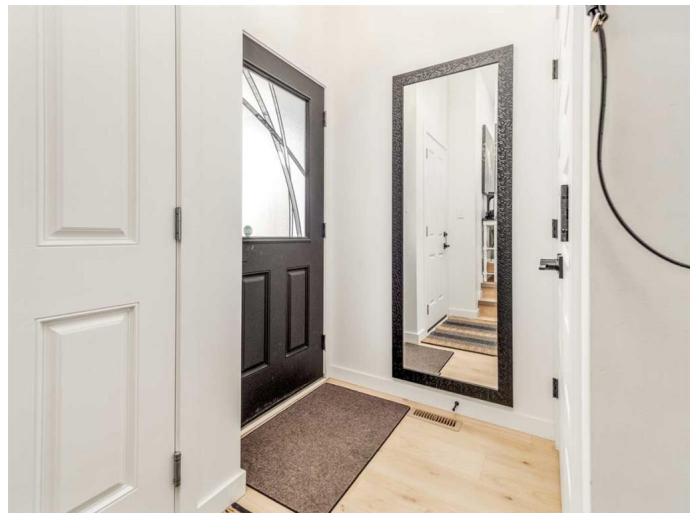
Garry Station, Lethbridge, Alberta

This beautifully located home is just steps from a park, playground, and even a tobogganing hillâ€”perfect for family fun! The standout feature is its extra-large veranda, ideal for relaxing outdoors. Inside, the main floor boasts an open-concept design with 9â€™™ ceilings and large windows that flood the space with natural light. The kitchen offers a spacious corner pantry for ample storage and quartz counter tops. Upstairs, youâ€™™ll find three generously sized bedrooms, a full bath, and the convenience of an upper-floor laundry room. The primary suite includes a walk-in closet and a private ensuite with a 5â€™™ shower. The undeveloped basement is ready for your vision, with space for a future family room, fourth bedroom, and additional full bath. Completing this fantastic home is a double attached heated garage. Situated in the quiet and charming community of Garry Station, this home provides easy access to downtown, amenities, and major roadways.

Built in 2021

Essential Information

MLS® #	A2198393
Price	\$479,000
Bedrooms	3
Bathrooms	3.00
Full Baths	2
Half Baths	1



Square Footage	1,336
Acres	0.09
Year Built	2021
Type	Residential
Sub-Type	Detached
Style	2 Storey
Status	Active

Community Information

Address	1142 Pacific Circle W
Subdivision	Garry Station
City	Lethbridge
County	Lethbridge
Province	Alberta
Postal Code	T1J 5V5

Amenities

Parking Spaces	4
Parking	Double Garage Attached
# of Garages	2

Interior

Interior Features	Kitchen Island, Pantry, Quartz Counters, Walk-In Closet(s)
Appliances	Central Air Conditioner, Dishwasher, Microwave Hood Fan, Refrigerator, Washer/Dryer, Window Coverings
Heating	Forced Air
Cooling	Central Air
Fireplace	Yes
# of Fireplaces	1
Fireplaces	Electric
Has Basement	Yes
Basement	Full, Unfinished

Exterior

Exterior Features	None
Lot Description	Back Lane, Back Yard
Roof	Asphalt Shingle
Construction	Concrete, Vinyl Siding, Wood Frame
Foundation	Poured Concrete

Additional Information

Date Listed	March 3rd, 2025
Days on Market	10
Zoning	R-SL

Listing Details

Listing Office	Grassroots Realty Group
----------------	-------------------------

Data is supplied by Pillar 9â„¸ MLSÂ® System. Pillar 9â„¸ is the owner of the copyright in its MLSÂ® System. Data is deemed reliable but is not guaranteed accurate by Pillar 9â„¸. The trademarks MLSÂ®, Multiple Listing ServiceÂ® and the associated logos are owned by The Canadian Real Estate Association (CREA) and identify the quality of services provided by real estate professionals who are members of CREA. Used under license.