

\$434,900 - 376 Thyrza Burkitt Link N, Lethbridge

MLS® #A2197020

\$434,900

4 Bedroom, 3.00 Bathroom, 998 sqft

Residential on 0.10 Acres

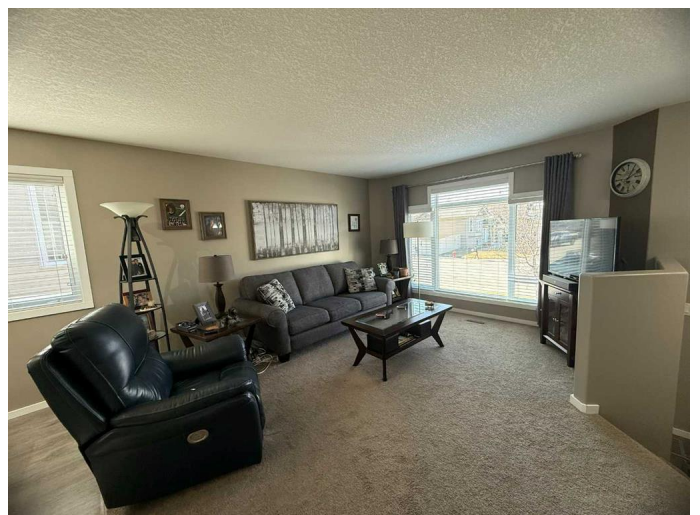
Legacy Ridge / Hardieville, Lethbridge, Alberta

Welcome to your new home in the beautiful community of Legacy Ridge! This bright and inviting bi-level is in an amazing location just blocks away from St. Teresa Elementary school and Legacy Park and minutes from grocery stores, gas stations, restaurants, and quick access to Scenic Drive and more. Step inside and you'll be greeted by large windows that fill the space with natural light. The main floor features 2 bedrooms, 2 bathrooms including a 4 piece ensuite, an open-concept layout with a cozy living room, a well-equipped kitchen, and a spacious primary bedroom. Downstairs. The finished basement offers a family room, two additional bedrooms, and a full bathroom. Outside you will find a front covered porch, rear deck, concrete patio, double garage, shed and a well manicured yard. This home has been well cared for with updates over the years to some flooring, countertops, backsplash, newer decking, paint, baseboard and trim and more.

Built in 2007

Essential Information

MLS® #	A2197020
Price	\$434,900
Bedrooms	4
Bathrooms	3.00
Full Baths	3
Square Footage	998



Acres	0.10
Year Built	2007
Type	Residential
Sub-Type	Detached
Style	Bi-Level
Status	Active

Community Information

Address	376 Thyrza Burkitt Link N
Subdivision	Legacy Ridge / Hardieville
City	Lethbridge
County	Lethbridge
Province	Alberta
Postal Code	T1K 5M5

Amenities

Parking Spaces	4
Parking	Double Garage Detached
# of Garages	2

Interior

Interior Features	Closet Organizers, No Smoking Home, Open Floorplan, See Remarks, Storage
Appliances	See Remarks
Heating	Forced Air
Cooling	Central Air
Has Basement	Yes
Basement	Finished, Full

Exterior

Exterior Features	Private Yard, Storage
Lot Description	Back Lane, Back Yard, Front Yard, Landscaped, Private, See Remarks
Roof	Asphalt Shingle
Construction	Mixed
Foundation	Poured Concrete

Additional Information

Date Listed	March 5th, 2025
Days on Market	9

Zoning R-SL

Listing Details

Listing Office SUTTON GROUP - LETHBRIDGE

Data is supplied by Pillar 9â,,ç MLSÂ® System. Pillar 9â,,ç is the owner of the copyright in its MLSÂ® System. Data is deemed reliable but is not guaranteed accurate by Pillar 9â,,ç. The trademarks MLSÂ®, Multiple Listing ServiceÂ® and the associated logos are owned by The Canadian Real Estate Association (CREA) and identify the quality of services provided by real estate professionals who are members of CREA. Used under license.