

# **\$669,900 - 15238 104 Street, Rural Grande Prairie No. 1, County of**

---

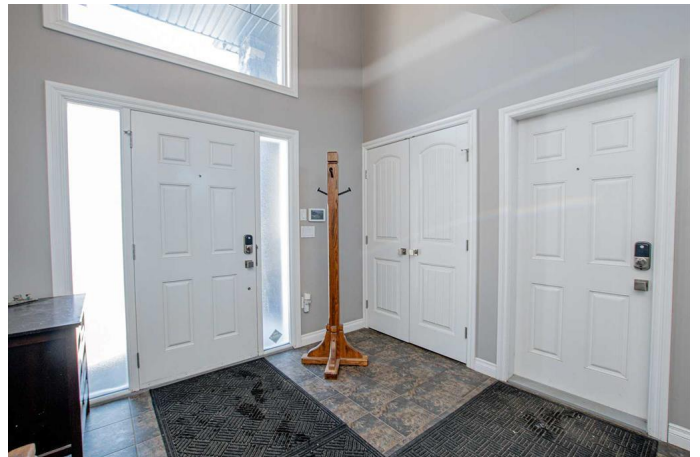
MLS® #A2193645

**\$669,900**

5 Bedroom, 3.00 Bathroom, 1,668 sqft  
Residential on 0.15 Acres

Whispering Ridge, Rural Grande Prairie No. 1,  
County of, Alberta

Located in the desirable community of Whispering Ridge, this fully finished modified bi-level home with heated double garage sits on a spacious corner lot across from a park and offers the benefit of lower county taxes. Featuring 5 bedrooms, a loft-style den area, plus 3 bathrooms, this home provides plenty of space for families of all sizes. The open concept main floor boasts an entertaining kitchen with ample counter & cupboard space, stainless steel appliances, and large island with eating bar. Complimented with a bright living area, a cozy gas fireplace and spacious dining room. Patio doors take you to the deck with a fully fenced and landscaped backyard. Two good sized bedrooms and a full bathroom complete your main floor. The primary suite is privately located on its own level, complete with a walk-in closet and luxurious 5 pc ensuite boasting a two sided fireplace. The fully developed walk out basement offers additional living space, perfect for a recreation room or home gym, 2 more bedrooms and a full bathroom. With a beautifully landscaped yard providing an oasis, you have a hot tub for relaxing with added privacy, plus ample parking with room for RV parking in the backyard, and close proximity to parks & schools, this home is a must-see! Book your showing today!



Built in 2011

## Essential Information

|                |                   |
|----------------|-------------------|
| MLS® #         | A2193645          |
| Price          | \$669,900         |
| Bedrooms       | 5                 |
| Bathrooms      | 3.00              |
| Full Baths     | 3                 |
| Square Footage | 1,668             |
| Acres          | 0.15              |
| Year Built     | 2011              |
| Type           | Residential       |
| Sub-Type       | Detached          |
| Style          | Modified Bi-Level |
| Status         | Active            |

## Community Information

|             |                                       |
|-------------|---------------------------------------|
| Address     | 15238 104 Street                      |
| Subdivision | Whispering Ridge                      |
| City        | Rural Grande Prairie No. 1, County of |
| County      | Grande Prairie No. 1, County of       |
| Province    | Alberta                               |
| Postal Code | T8X 0J5                               |

## Amenities

|                |                        |
|----------------|------------------------|
| Parking Spaces | 4                      |
| Parking        | Double Garage Attached |
| # of Garages   | 2                      |

## Interior

|                   |  |
|-------------------|--|
| Interior Features | Kitchen Island, Open Floorplan, See Remarks                                    |
| Appliances        | Dishwasher, Dryer, Microwave, Refrigerator, Stove(s), Washer, Window Coverings |
| Heating           | Forced Air   |
| Cooling           | None   |
| Fireplace         | Yes  |
| # of Fireplaces   | 2  |
| Fireplaces        | Gas  |
| Has Basement      | Yes  |

|          |                          |
|----------|--------------------------|
| Basement | Finished, Full, Walk-Out |
|----------|--------------------------|

## Exterior

|                   |                        |
|-------------------|------------------------|
| Exterior Features | None                   |
| Lot Description   | Landscaped, Corner Lot |
| Roof              | Asphalt Shingle        |
| Construction      | Stone, Vinyl Siding    |
| Foundation        | Poured Concrete        |

## Additional Information

|                |                     |
|----------------|---------------------|
| Date Listed    | February 11th, 2025 |
| Days on Market | 62                  |
| Zoning         | RR-2                |

## Listing Details

|                |                       |
|----------------|-----------------------|
| Listing Office | RE/MAX Grande Prairie |
|----------------|-----------------------|

Data is supplied by Pillar 9â„¢ MLS® System. Pillar 9â„¢ is the owner of the copyright in its MLS® System. Data is deemed reliable but is not guaranteed accurate by Pillar 9â„¢. The trademarks MLS®, Multiple Listing Service® and the associated logos are owned by The Canadian Real Estate Association (CREA) and identify the quality of services provided by real estate professionals who are members of CREA. Used under license.