

# \$119,000 - 182, 14457 Twp Rd 683, Lac La Biche County

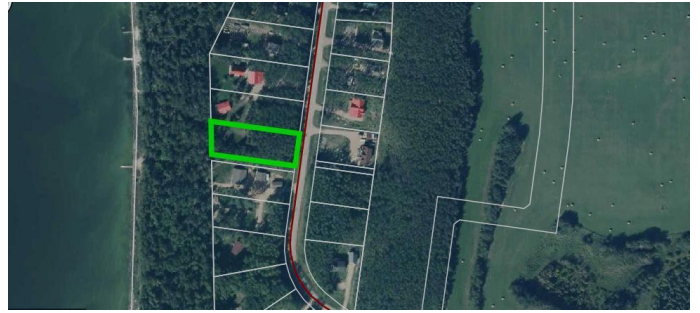
MLS® #A2190984

**\$119,000**

0 Bedroom, 0.00 Bathroom,  
Land on 0.70 Acres

Poplar Point, Lac La Biche County, Alberta

Located in the Poplar Point Subdivision on the north side of Lac La Biche Lake, this beautiful treed lot offers 0.7 acres of space with access to the lake's shores. A perfect opportunity to build your dream cabin, park your RV, or invest in a recreational property just 30 minutes from Lac La Biche! This lot can be packaged if purchased with the neighboring cabin for an incredible opportunity! Don't miss out—contact us today for details!



## Essential Information

MLS® #	A2190984
Price	\$119,000
Bathrooms	0.00
Acres	0.70
Type	Land
Sub-Type	Recreational
Status	Active

## Community Information

Address	182, 14457 Twp Rd 683
Subdivision	Poplar Point
City	Lac La Biche County
County	Lac La Biche County
Province	Alberta
Postal Code	T0A 2C0

## Amenities

Utilities	Electricity Available, Natural Gas Available
-----------	--

## Additional Information

Date Listed	January 28th, 2025
Days on Market	82
Zoning	Vacant Residential

## Listing Details

Listing Office	RE/MAX LA BICHE REALTY
----------------	------------------------

Data is supplied by Pillar 9â„¢ MLS® System. Pillar 9â„¢ is the owner of the copyright in its MLS® System. Data is deemed reliable but is not guaranteed accurate by Pillar 9â„¢. The trademarks MLS®, Multiple Listing Service® and the associated logos are owned by The Canadian Real Estate Association (CREA) and identify the quality of services provided by real estate professionals who are members of CREA. Used under license.