

# \$429,000 - 4411 Township Road 322a, Rural Mountain View County

MLS® #A2188057

**\$429,000**

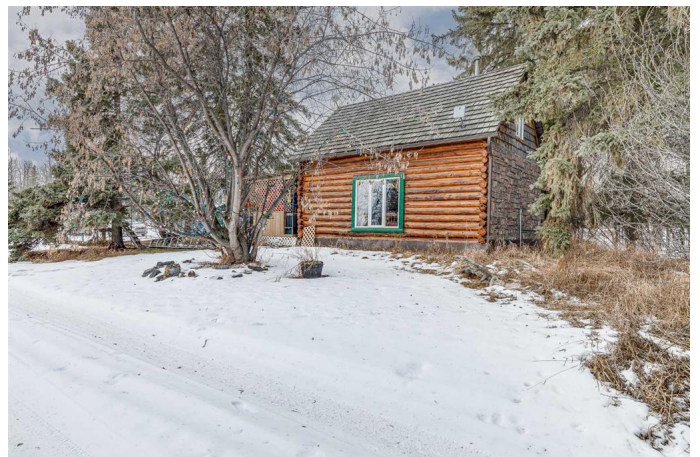
1 Bedroom, 1.00 Bathroom, 759 sqft  
Residential on 3.76 Acres

NONE, Rural Mountain View County, Alberta

A Once-in-a-Lifetime Opportunity: Charming  
113-Year-Old Homesteader Cabin on 3.76  
Acres

If these walls could talk, they would share tales of timeless charm and adventure. This beautifully preserved 113-year-old homesteader cabin offers a rare opportunity to own a piece of history, set amidst breathtaking natural beauty. Imagine cozy evenings within its solid log walls, sipping hot chocolate as snowstorms swirl outside. Picture the wildlife—elk, bear, moose, and even cougar meandering through, feeding on spring buds, while your heart is warmed by the rugged serenity of the land.

Gather your friends and family for unforgettable weekends, with four RV plug-ins ready to accommodate campers. Birdsong, hooting owls, and chattering squirrels become your daily soundtrack, with the occasional skunk rambling by to complete the experience. Privacy is assured with mature trees and shrubs surrounding this retreat, creating a peaceful haven where you can connect with nature. Located within walking distance of the Red Deer River and just down the road from the Westward Ho Campground and Little Red Deer Store, this property offers easy access to Sundre and the conveniences of town. Recent upgrades ensure modern comfort, including a cedar shake roof, updated windows, and rewired electrical systems completed in 2014.



The Solar-powered Command Gate welcomes you to your private sanctuary, offering both convenience and security.

Whether you're seeking a weekend escape or a year-round residence, this stunning property provides the perfect balance of peace, tranquility, and convenience and all just an hour from the city. Don't miss out on this unique opportunity to own a piece of Alberta's heritage, where memories of a lifetime await. Contact your favorite realtor today to arrange a private showing and experience the magic of this extraordinary property for yourself.

Built in 1910

### Essential Information

MLS® #	A2188057
Price	\$429,000
Bedrooms	1
Bathrooms	1.00
Full Baths	1
Square Footage	759
Acres	3.76
Year Built	1910
Type	Residential
Sub-Type	Detached
Style	Acreage with Residence, 1 and Half Storey
Status	Active

### Community Information

Address	4411 Township Road 322a
Subdivision	NONE
City	Rural Mountain View County
County	Mountain View County
Province	Alberta
Postal Code	T0M 1X0

### Amenities

Utilities Electricity Paid For, Heating Paid For, Phone Not Available, Water Paid For

Parking Parking Pad

### **Interior**

Interior Features No Smoking Home, See Remarks, Natural Woodwork

Appliances Electric Stove, Refrigerator, Washer/Dryer Stacked

Heating Forced Air, Natural Gas

Cooling None

Basement None

### **Exterior**

Exterior Features Private Yard, Dog Run, Kennel, RV Hookup

Lot Description Backs on to Park/Green Space, Rectangular Lot, Views, Creek/River/Stream/Pond, Fruit Trees/Shrub(s), Rolling Slope

Roof Cedar Shake

Construction Log

Foundation See Remarks

### **Additional Information**

Date Listed January 16th, 2025

Days on Market 82

Zoning CR

### **Listing Details**

Listing Office RE/MAX Landan Real Estate

Data is supplied by Pillar 9â„¢ MLSÂ® System. Pillar 9â„¢ is the owner of the copyright in its MLSÂ® System. Data is deemed reliable but is not guaranteed accurate by Pillar 9â„¢. The trademarks MLSÂ®, Multiple Listing ServiceÂ® and the associated logos are owned by The Canadian Real Estate Association (CREA) and identify the quality of services provided by real estate professionals who are members of CREA. Used under license.