

# \$429,900 - 8441 102 Avenue, Grande Prairie

MLS® #A2187209

**\$429,900**

3 Bedroom, 3.00 Bathroom, 1,400 sqft  
Residential on 0.12 Acres

Crystal Landing, Grande Prairie, Alberta

Introducing an exciting opportunity to build your dream home in the sought-after Crystal Landing neighborhood! This soon-to-be-built two-story home offers you the chance to select your own finishes and personalize the space to suit your style. With a planned layout that includes an open-concept main floor, a spacious kitchen with ample storage and counter space, and a welcoming foyer, this home is designed for both comfort and functionality. Upstairs, the plan features three bedrooms, including a grand primary suite with a walk-in closet and private ensuite, as well as a conveniently located laundry area. Youâ€™™ also have the flexibility to design the unfinished basement and the option to add a detached double garage. This is your opportunity to create a home that fits your vision from the very start. Contact us today to learn more and start the journey toward building your perfect home!



Built in 2025

## Essential Information

MLS® #	A2187209
Price	\$429,900
Bedrooms	3
Bathrooms	3.00
Full Baths	2
Half Baths	1
Square Footage	1,400

Acres 0.12  
Year Built 2025  
Type Residential  
Sub-Type Detached  
Style 2 Storey  
Status Active

### Community Information

Address 8441 102 Avenue  
Subdivision Crystal Landing  
City Grande Prairie  
County Grande Prairie  
Province Alberta  
Postal Code T8X0S8

### Amenities

Parking Spaces 2  
Parking Parking Pad

### Interior

Interior Features Kitchen Island, No Animal Home, No Smoking Home, Open Floorplan, Quartz Counters  
Appliances Microwave Hood Fan  
Heating Forced Air, Natural Gas  
Cooling None  
Fireplace Yes  
# of Fireplaces 1  
Fireplaces Electric  
Basement None

### Exterior

Exterior Features Other  
Lot Description Back Yard, City Lot  
Roof Asphalt Shingle  
Construction Vinyl Siding, Concrete  
Foundation Poured Concrete

### Additional Information

Date Listed January 10th, 2025

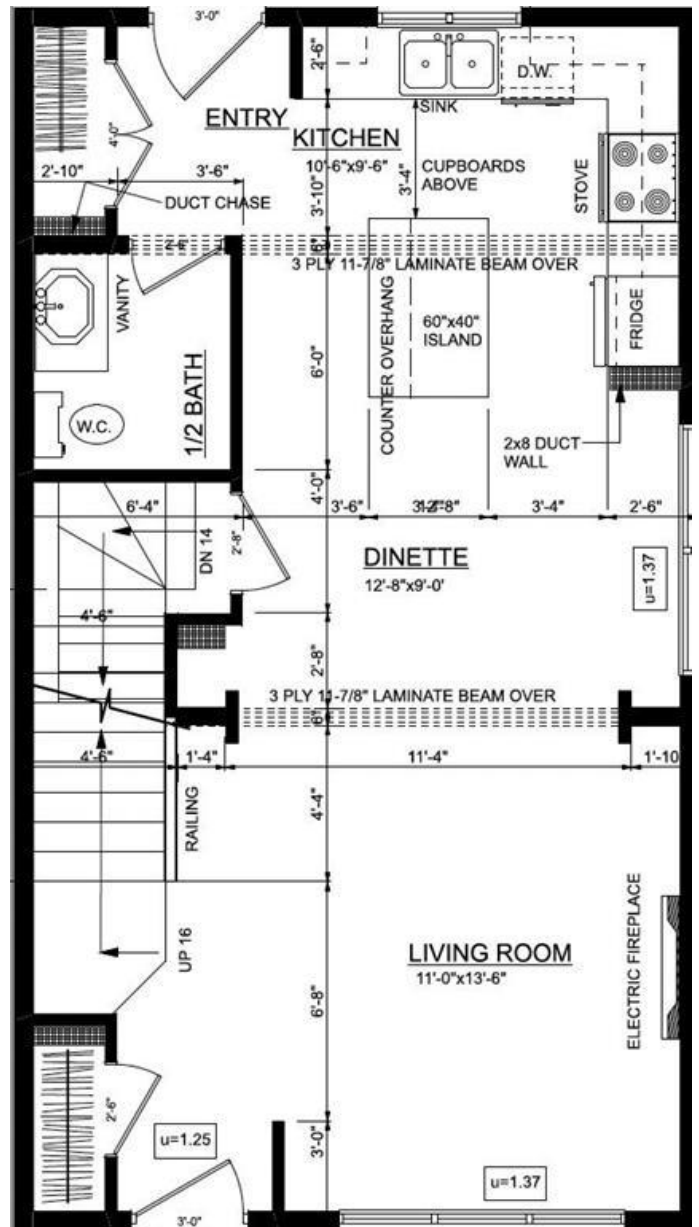


Days on Market 83

Zoning RS

### Listing Details

Listing Office RE/MAX Grande Prairie



Data is supplied by Pillar 9â,,ç MLSÂ® System. Pillar 9â,,ç is the owner of the copyright in its MLSÂ® System. Data is deemed reliable but is not guaranteed accurate by Pillar 9â,,ç. The trademarks MLSÂ®, Multiple Listing ServiceÂ® and the associated logos are owned by The Canadian Real Estate Association (CREA) and identify the quality of services provided by real estate professionals who are members of CREA. Used under license.