

\$12,400 - 54 Sifton Crescent, Lougheed

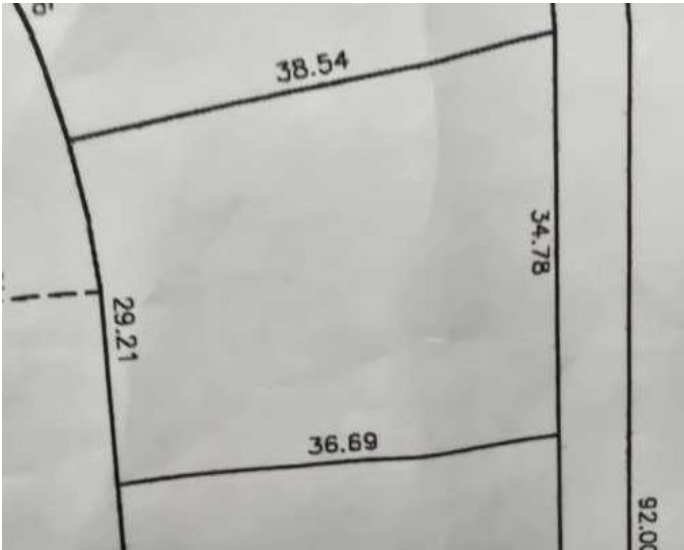
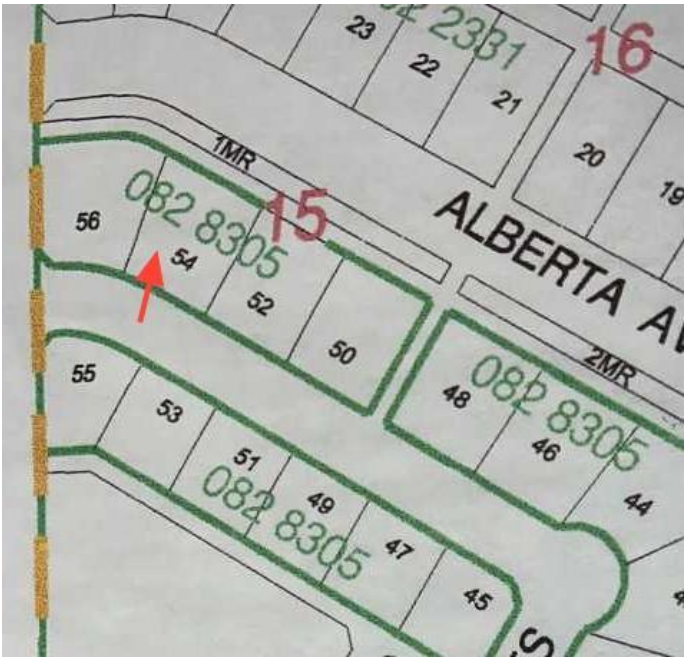
MLS® #A2186914

\$12,400

0 Bedroom, 0.00 Bathroom,
Land on 0.29 Acres

Lougheed, Lougheed, Alberta

Build your dream home in the quiet Village of Lougheed on this lot. Easy access to Wainwright or Camrose. Enjoy the peaceful community while still having all the amenities close by. No building timeline commitment



Essential Information

MLS® #	A2186914
Price	\$12,400
Bathrooms	0.00
Acres	0.29
Type	Land
Sub-Type	Residential Land
Status	Active

Community Information

Address	54 Sifton Crescent
Subdivision	Lougheed
City	Lougheed
County	Flagstaff County
Province	Alberta
Postal Code	T0B 2V0

Additional Information

Date Listed	January 14th, 2025
Days on Market	97
Zoning	R

Listing Details

Listing Office

CIR Realty

Data is supplied by Pillar 9â„¢ MLSÂ® System. Pillar 9â„¢ is the owner of the copyright in its MLSÂ® System. Data is deemed reliable but is not guaranteed accurate by Pillar 9â„¢. The trademarks MLSÂ®, Multiple Listing ServiceÂ® and the associated logos are owned by The Canadian Real Estate Association (CREA) and identify the quality of services provided by real estate professionals who are members of CREA. Used under license.