

\$5,900,000 - Highway 20 Township Road 391, Sylvan Lake

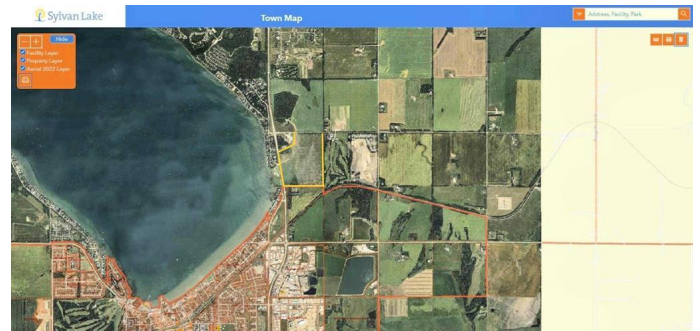
MLS® #A2186720

\$5,900,000

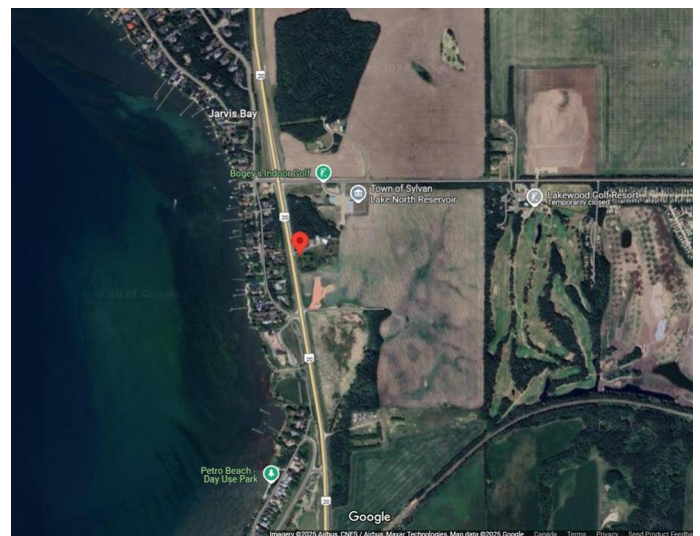
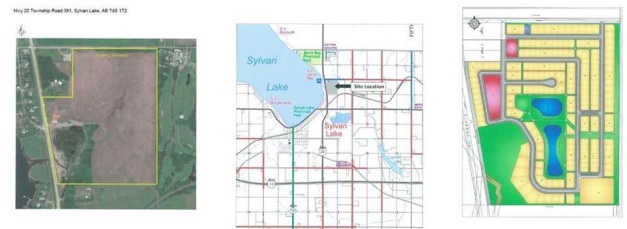
0 Bedroom, 0.00 Bathroom,
Land on 123.98 Acres

NONE, Sylvan Lake, Alberta

SYLVAN LAKE DEVELOPMENT OPPORTUNITY! CALLING ALL INVESTORS AND DEVELOPERS! This Quarter-section (123 acre parcel) is situated in the heart of the Central Alberta Region on Highway 20. To the west is the Summer Village of Jarvis Bay, to the north is TWP Road 391, to the east is the Lakewood Golf Resort and to the south is open farm land which stretches 0.8 kilometers to the town of Sylvan Lake. This Property is located 25 minutes west of Red Deer, and 90 minutes from Calgary and Edmonton. The area structure plan in place consists of 80 single family homes, 260 duplexes, one social care and 2 commercial lots. The lots are Approximately 40% -lakeview, 15% - park side, 15% - Golf Course views and 3% -border pristine wetlands. The farmhouse is currently tenanted. There is a surface lease in place. The Zoning is for Residential Low Density District R-3 and Direct Control District No.25 DCD-25 and deemed that the subdivision as proposed complies with The Municipal Government Act, The Municipal Development Plan, The Sylvan Lake/Red Deer County Intermunicipal Plan, The Sanbar Local Area Structure Plan and The Land Use Bylaw. Red Deer County supports the amendment to increase densities in the area and recognizes that the Plan Area will eventually be annexed into the Town of Sylvan Lake. This increase in density will be completed by utilizing the Town



Hwy 20 Township Road 391



of Sylvan Lake policies, developing as per the Towns Land Use Bylaw, and introducing a significant amount of higher density housing options in the form of townhouses and apartment buildings. Through the creation of the initial Concept Plan, there is potential for 950+ units through a mixture of fee simple lots (600 units) and condominium developments (360 units). As the project advances to the municipal circulation and approval stage, the Concept Plan and densities will be refined, with both Red Deer County as the approval body and the Town of Sylvan Lake as the adjacent municipality. Discussions with the Town of Sylvan Lake have also occurred, and they are supportive of the development, recognizing that it would be annexed into the Town, in the future. Servicing of the lands has been described in both the County's and Town's infrastructure master plans. All services will be provided by the Town of Sylvan Lake through interim and ultimate options. Ongoing discussions will be had as part of the planning and future detailed design processes to advance the development of Sanbar Estate. Contact us today for more information!

Essential Information

MLS® #	A2186720
Price	\$5,900,000
Bathrooms	0.00
Acres	123.98
Type	Land
Sub-Type	Residential Land
Status	Active

Community Information

Address	Highway 20 Township Road 391
Subdivision	NONE

City	Sylvan Lake
County	Red Deer County
Province	Alberta
Postal Code	T4S 1T2

Amenities

Waterfront	See Remarks
------------	-------------

Exterior

Lot Description	Corner Lot, Few Trees, Fruit Trees/Shrub(s), Gentle Sloping, Irregular Lot, Near Golf Course, Pasture, Private, See Remarks, Views, Farm
-----------------	--

Additional Information

Date Listed	January 13th, 2025
Days on Market	98
Zoning	DCD-25

Listing Details

Listing Office	Century 21 Bamber Realty LTD.
----------------	-------------------------------

Data is supplied by Pillar 9â„¢ MLS® System. Pillar 9â„¢ is the owner of the copyright in its MLS® System. Data is deemed reliable but is not guaranteed accurate by Pillar 9â„¢. The trademarks MLS®, Multiple Listing Service® and the associated logos are owned by The Canadian Real Estate Association (CREA) and identify the quality of services provided by real estate professionals who are members of CREA. Used under license.