

# \$634,999 - 350 Chelsea Hollow, Chestermere

MLS® #A2184496

## \$634,999

5 Bedroom, 4.00 Bathroom, 1,545 sqft  
Residential on 0.06 Acres

Chelsea\_CH, Chestermere, Alberta

OVER 2200 SQFT of living space. Built in 2023 by Truman Homes, this single-family laned home in the thriving community of Chelsea, Chestermere, offers modern design and incredible versatility. Featuring 5 and 3.5 bathrooms, this property is perfect for families or investors.

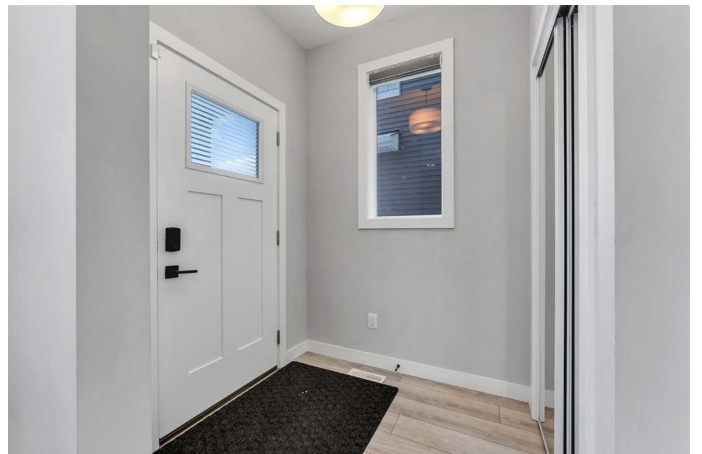
The home includes quartz countertops throughout, 9-foot ceilings, and brand-new appliances. The fully finished basement, with a separate entrance, provides an excellent opportunity for rental income, whether for upstairs and downstairs tenants or for a family looking to offset their mortgage.

Conveniently located on a cul-de-sac, this property offers ample street parking, along with a concrete parking pad in the back alley. Move-in ready and priced at \$649,000, this home combines style, functionality, and an excellent location. Book your showings!

Built in 2023

## Essential Information

MLS® #	A2184496
Price	\$634,999
Bedrooms	5
Bathrooms	4.00
Full Baths	3
Half Baths	1



Square Footage	1,545
Acres	0.06
Year Built	2023
Type	Residential
Sub-Type	Detached
Style	2 Storey
Status	Active

### **Community Information**

Address	350 Chelsea Hollow
Subdivision	Chelsea_CH
City	Chestermere
County	Chestermere
Province	Alberta
Postal Code	T1X 2T3

### **Amenities**

Parking Spaces	4
Parking	Concrete Driveway, Off Street, On Street, Parking Pad

### **Interior**

Interior Features	High Ceilings, Quartz Counters, Storage, Walk-In Closet(s), Separate Entrance
Appliances	Dishwasher, Microwave, Refrigerator, Electric Oven
Heating	Central, Forced Air
Cooling	None
Has Basement	Yes
Basement	Exterior Entry, Finished, Full

### **Exterior**

Exterior Features	None
Lot Description	Back Lane, Back Yard, Cul-De-Sac, Rectangular Lot, Front Yard, Zero Lot Line
Roof	Asphalt Shingle
Construction	Concrete, Vinyl Siding, Wood Frame
Foundation	Poured Concrete

### **Additional Information**

Date Listed	January 6th, 2025
-------------	-------------------

Days on Market 88

Zoning R1

### **Listing Details**

Listing Office Real Broker

Data is supplied by Pillar 9â,,ç MLSÂ® System. Pillar 9â,,ç is the owner of the copyright in its MLSÂ® System. Data is deemed reliable but is not guaranteed accurate by Pillar 9â,,ç. The trademarks MLSÂ®, Multiple Listing ServiceÂ® and the associated logos are owned by The Canadian Real Estate Association (CREA) and identify the quality of services provided by real estate professionals who are members of CREA. Used under license.