

\$79,900 - Ne-33-76-5-w6 Hwy 2, Rural Saddle Hills County

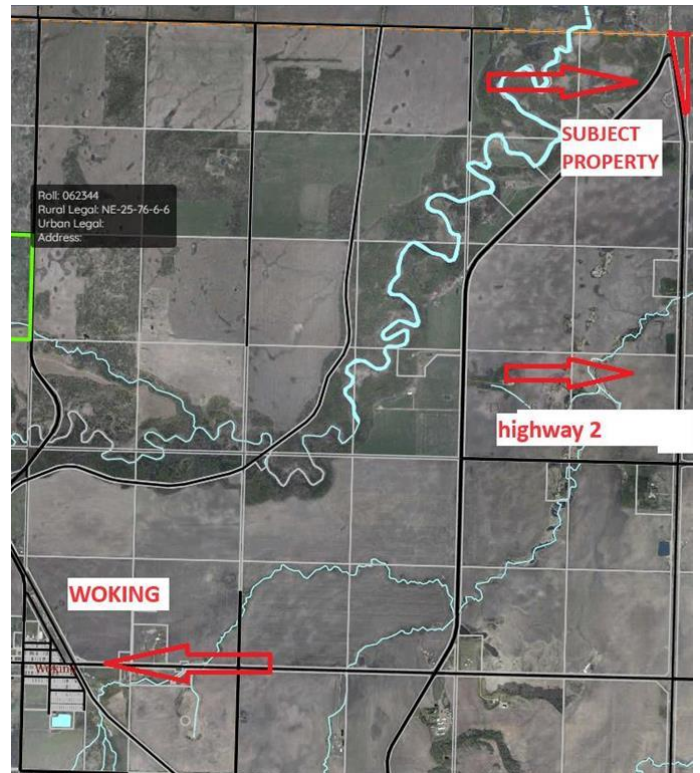
MLS® #A2179186

\$79,900

0 Bedroom, 0.00 Bathroom,
Land on 7.02 Acres

NONE, Rural Saddle Hills County, Alberta

Great little 7 acre parcel with great exposure to highway 2. This property has an AG zoning attached to it. If you are looking for the zoning details please reach out to your favorite real estate agent to get a copy (can be found in supplements). Could be a nice spot for an acreage or potentially a small business. Vacant land, lightly treed.



Essential Information

MLS® #	A2179186
Price	\$79,900
Bathrooms	0.00
Acres	7.02
Type	Land
Sub-Type	Residential Land
Status	Active

Community Information

Address	Ne-33-76-5-w6 Hwy 2
Subdivision	NONE
City	Rural Saddle Hills County
County	Saddle Hills County
Province	Alberta
Postal Code	T0H 3V0

Additional Information

Date Listed	November 14th, 2024
-------------	---------------------

Days on Market 159

Zoning na

Listing Details

Listing Office Grassroots Realty Group Ltd.



Data is supplied by Pillar 9â„¢ MLSÂ© System. Pillar 9â„¢ is the owner of the copyright in its MLSÂ© System. Data is deemed reliable but is not guaranteed accurate by Pillar 9â„¢. The trademarks MLSÂ©, Multiple Listing ServiceÂ© and the associated logos are owned by The Canadian Real Estate Association (CREA) and identify the quality of services provided by real estate professionals who are members of CREA. Used under license.