

# \$825,000 - 105 Mcpherson Square, Hinton

MLS® #A2179032

**\$825,000**

6 Bedroom, 5.00 Bathroom, 2,524 sqft  
Residential on 0.31 Acres

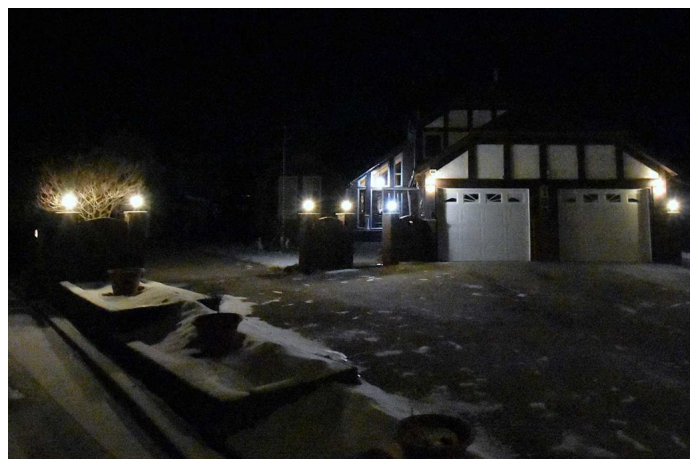
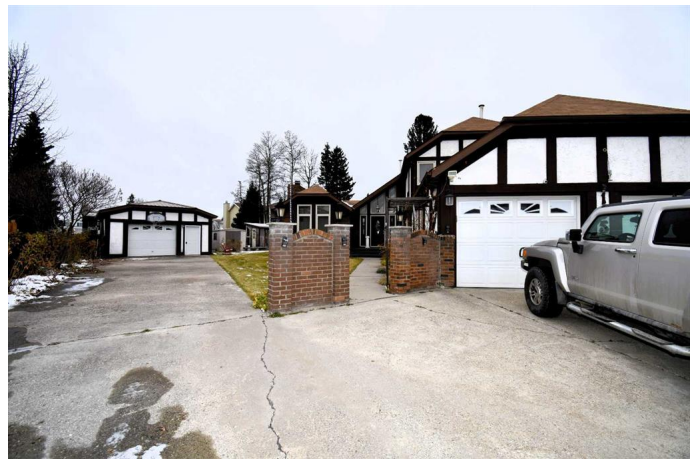
Hillcrest, Hinton, Alberta

Welcome to 105 McPherson Square in Hinton, Alberta; an amazing 2 storey home with 6 bedrooms and 5 bathrooms. This home would be perfect for an Air BnB (it comes with most of the furnishings) and it has tons of parking to accommodate guests! You will, without a doubt, be impressed by the 2524 sq. ft. of beautiful living space this home has to offer you and your family. In the last eight years, \$100,000 has gone into Brazilian-hardwood flooring, new doors, triple-glazed windows, appliances, and granite counter tops. The basement is fully finished with 2 bedrooms, a family room and an office. Two garages compliment this unique property; a double being attached and the other detached from the home. The yard is huge and nicely landscaped. The rear deck has wiring for a hot tub all ready to go! Use the detached garage as a workshop or house your classic car or motorcycle. 105 McPherson Square is a unique-must see!

Built in 1978

## Essential Information

MLS® #	A2179032
Price	\$825,000
Bedrooms	6
Bathrooms	5.00
Full Baths	3
Half Baths	2



Square Footage	2,524
Acres	0.31
Year Built	1978
Type	Residential
Sub-Type	Detached
Style	2 Storey
Status	Active

### **Community Information**

Address	105 Mcpherson Square
Subdivision	Hillcrest
City	Hinton
County	Yellowhead County
Province	Alberta
Postal Code	T7V 1J9

### **Amenities**

Utilities	Electricity Available, Natural Gas Available, Phone Available
Parking Spaces	6
Parking	RV Access/Parking
# of Garages	3

### **Interior**

Interior Features	Bar, Granite Counters, Kitchen Island
Appliances	Built-In Oven, Dryer, Microwave, Refrigerator, Washer, Window Coverings, Built-In Range
Heating	Forced Air
Cooling	None
Fireplace	Yes
# of Fireplaces	3
Fireplaces	Wood Burning
Has Basement	Yes
Basement	Finished, Full

### **Exterior**

Exterior Features	Balcony
Lot Description	Landscaped, Level, Pie Shaped Lot, Corner Lot, Irregular Lot
Roof	Asphalt Shingle
Construction	Stucco, Wood Frame, Wood Siding

Foundation            Poured Concrete

### **Additional Information**

Date Listed            November 14th, 2024

Days on Market        120

Zoning                 R-S2

### **Listing Details**

Listing Office            COLDWELL BANKER HINTON REAL ESTATE

Data is supplied by Pillar 9â„¢ MLSÂ® System. Pillar 9â„¢ is the owner of the copyright in its MLSÂ® System. Data is deemed reliable but is not guaranteed accurate by Pillar 9â„¢. The trademarks MLSÂ®, Multiple Listing ServiceÂ® and the associated logos are owned by The Canadian Real Estate Association (CREA) and identify the quality of services provided by real estate professionals who are members of CREA. Used under license.