

\$925,000 - 9300 69 Avenue, Clairmont

MLS® #A2178101

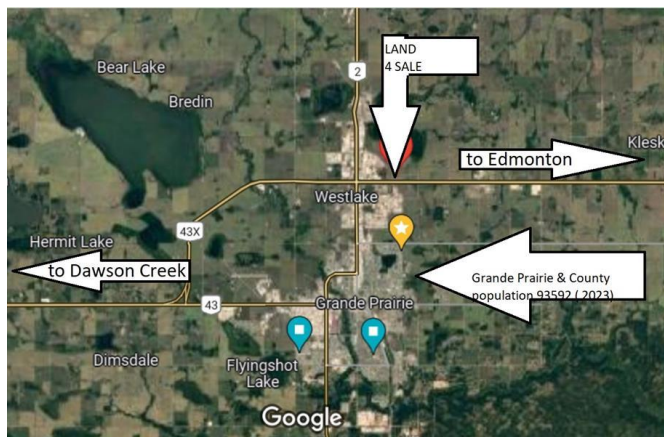
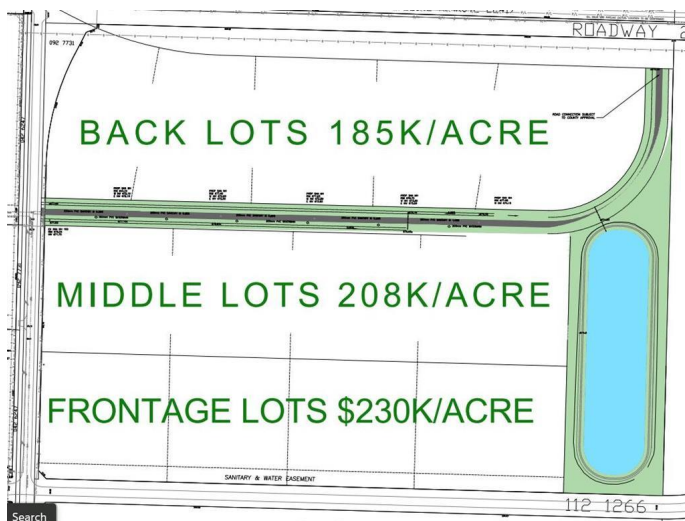
\$925,000

0 Bedroom, 0.00 Bathroom,
Land on 5.00 Acres

NONE, Clairmont, Alberta

5 acres industrial land with water sewer gas and power! Prime Industrial Subdivision by 4 Mile corner just 3 minutes north of Grande Prairie. 5-40+ acres, seller will subdivide to suite your size and dimensional needs! Major road frontage and highway visibility featuring city water and sewer. HWY43 INDUSTRIAL SUBDIVISION BENEFITS -Flexible Size, subdivide to suit, 5-40+ acre lots available -City Water & Sewer, Power and Gas -Highway 43 Visibility on frontage lots -Possible North and South

Entrances/Approaches if Front and Middle lots are purchased together -In the county of GP only 5 minutes to the city -Surrounded by amenities and National Brands -Flexible pricing to fit your budget \$230k an acre for frontage lots,\$208k/acre for middle lots,\$185k for back lots. -REQUEST A FULL BROCHURE



Essential Information

MLS® #	A2178101
Price	\$925,000
Bathrooms	0.00
Acres	5.00
Type	Land
Sub-Type	Industrial Land
Status	Active

Community Information

Address 9300 69 Avenue

Subdivision	NONE
City	Clairmont
County	Grande Prairie No. 1, County of
Province	Alberta
Postal Code	T8X 5B3

Amenities

Utilities	Electricity Available, Natural Gas Available, Sewer Available, Water Available
-----------	--

Additional Information

Date Listed	November 7th, 2024
Days on Market	148
Zoning	rm1/2

Listing Details

Listing Office	Sutton Group Grande Prairie Professionals
----------------	---

Data is supplied by Pillar 9â,,ç MLSÂ® System. Pillar 9â,,ç is the owner of the copyright in its MLSÂ® System. Data is deemed reliable but is not guaranteed accurate by Pillar 9â,,ç. The trademarks MLSÂ®, Multiple Listing ServiceÂ® and the associated logos are owned by The Canadian Real Estate Association (CREA) and identify the quality of services provided by real estate professionals who are members of CREA. Used under license.