

\$205,000 - 5002, 5008, 5010 50 Avenue, Benalto

MLS® #A2157430

\$205,000

0 Bedroom, 0.00 Bathroom,
Land on 0.40 Acres

NONE, Benalto, Alberta

Large parcel of land (3Lots) with 150 ft of frontage available in the peaceful hamlet of Benalto. So many opportunities available. Bring your imagination and your plans and unlock the potential for this land. Check out the permitted uses with local zoning regulations to see what fits for this land. This lot has great views to the mountains.

Essential Information

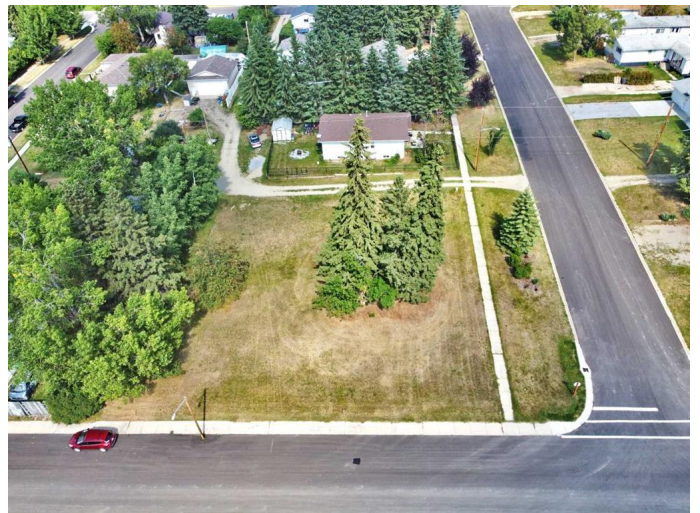
| | |
|-----------|------------------|
| MLS® # | A2157430 |
| Price | \$205,000 |
| Bathrooms | 0.00 |
| Acres | 0.40 |
| Type | Land |
| Sub-Type | Residential Land |
| Status | Active |

Community Information

| | |
|-------------|----------------------------|
| Address | 5002, 5008, 5010 50 Avenue |
| Subdivision | NONE |
| City | Benalto |
| County | Red Deer County |
| Province | Alberta |
| Postal Code | T0M 0H0 |

Additional Information

| | |
|----------------|-------------------|
| Date Listed | August 13th, 2024 |
| Days on Market | 233 |



Zoning DCD-7 comprehensive town

Listing Details

Listing Office RE/MAX real estate central alberta - Sylvan Lake

Data is supplied by Pillar 9â„¸ MLSÂ® System. Pillar 9â„¸ is the owner of the copyright in its MLSÂ® System. Data is deemed reliable but is not guaranteed accurate by Pillar 9â„¸. The trademarks MLSÂ®, Multiple Listing ServiceÂ® and the associated logos are owned by The Canadian Real Estate Association (CREA) and identify the quality of services provided by real estate professionals who are members of CREA. Used under license.