

# \$1,100,000 - 261062 Township Road 422, Rural Ponoka County

MLS® #A2144457

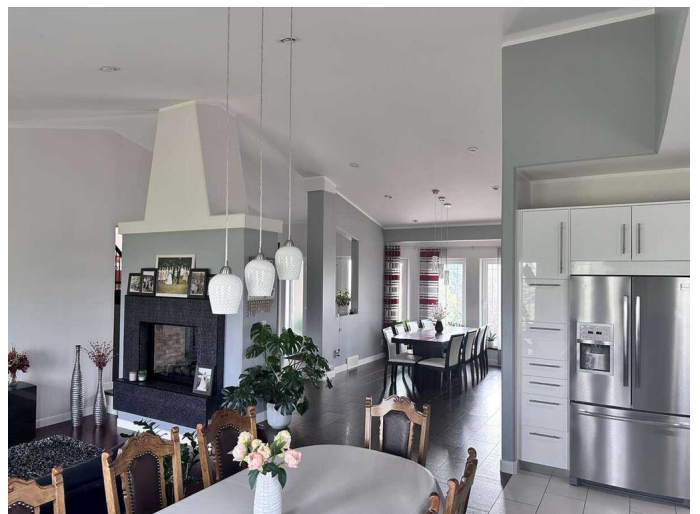
**\$1,100,000**

6 Bedroom, 4.00 Bathroom, 2,018 sqft  
Residential on 8.15 Acres

NONE, Rural Ponoka County, Alberta

For more information, please click on Brochure button below.

Welcome to this dream home, located just north of Morningside! This property is well maintained and offers the perfect blend of peacefulness and convenience, with only a 7-minute drive to Ponoka and 15 minutes to Lacombe. Situated on 8.15 acres of land, of which 4 are maintained. Featuring a 26' x 40' heated shop equipped with 40 amp service as well as two barns/sheds with 15 amp power, this property is ideal for hobby farmers and outdoor enthusiasts. With a convenient 3-car garage and 2-bay shop, there's plenty of space for all your vehicles and equipment. The home is constructed in a modern European style with an inviting open-concept layout. The living room features beautiful hardwood floors, while the kitchen and dining area boast easily maintainable tiles. A large walk-in pantry with a countertop, electrical plugs, and a window provides ample storage space, natural light, and pure convenience. The natural gas fireplace can be set on a schedule for cozy evenings in the living room. There are six spacious bedrooms and 3.5 bathrooms, including one in the master bedroom. The basement is finished as an open space. Outside, there is a large deck, which offers plenty of room for a dining table and BBQ. With European windows and doors with triple-pane glass and in-floor heating



throughout, this home offers both luxury and efficiency. Additional features include a cold storage room in the basement and a central vacuum system for added convenience. Beautifully home!

Built in 2010

### Essential Information

MLS® #	A2144457
Price	\$1,100,000
Bedrooms	6
Bathrooms	4.00
Full Baths	3
Half Baths	1
Square Footage	2,018
Acres	8.15
Year Built	2010
Type	Residential
Sub-Type	Detached
Style	Acreage with Residence, Bi-Level
Status	Active

### Community Information

Address	261062 Township Road 422
Subdivision	NONE
City	Rural Ponoka County
County	Ponoka County
Province	Alberta
Postal Code	T4J 1R3

### Amenities

Parking Spaces	7
Parking	Double Garage Detached, Parking Pad, Triple Garage Attached
# of Garages	3

### Interior

Interior Features	Bathroom Rough-in, Built-in Features, Central Vacuum, Closet Organizers, High Ceilings, Laminate Counters, No Animal Home, No
-------------------	---

Smoking Home, Open Floorplan, Pantry, Recessed Lighting, Sauna, Separate Entrance, Storage, Suspended Ceiling, Vaulted Ceiling(s), Wired for Data

Appliances	Built-In Oven, Convection Oven, Dishwasher, Dryer, Electric Cooktop, Electric Oven, Electric Stove, Freezer, Garage Control(s), Microwave, Oven, Oven-Built-In, Range Hood, Refrigerator, Washer, Washer/Dryer, Water Conditioner, Water Softener, Window Coverings
Heating	Central, High Efficiency, In Floor, Exhaust Fan, Fireplace(s), Natural Gas
Cooling	None
Fireplace	Yes
# of Fireplaces	1
Fireplaces	Gas
Has Basement	Yes
Basement	Exterior Entry, Finished, Full

## Exterior

Exterior Features	Fire Pit, Garden, Kennel, Private Entrance, Private Yard, Rain Barrel/Cistern(s), Storage
Lot Description	Back Yard, Dog Run Fenced In, Farm, Fruit Trees/Shrub(s), Front Yard, Lawn, Garden, Landscaped, Level, Pasture, Paved, Private, Rectangular Lot, Treed
Roof	Asphalt, Asphalt Shingle
Construction	Concrete, ICFs (Insulated Concrete Forms), Manufactured Floor Joist, Stucco, Wood Frame
Foundation	ICF Block, Slab

## Additional Information

Date Listed	June 25th, 2024
Days on Market	261
Zoning	CRH

## Listing Details

Listing Office	Easy List Realty
----------------	------------------

Data is supplied by Pillar 9â„¢ MLSÂ® System. Pillar 9â„¢ is the owner of the copyright in its MLSÂ® System. Data is deemed reliable but is not guaranteed accurate by Pillar 9â„¢. The trademarks MLSÂ®, Multiple Listing ServiceÂ® and the associated logos are owned by The Canadian Real Estate Association (CREA) and identify the quality of services provided by real estate professionals who are members of CREA. Used under license.