

\$375,000 - 105, 103037 Twp Rd 672, Lac La Biche

MLS® #A2143218

\$375,000

0 Bedroom, 0.00 Bathroom,
Land on 55.48 Acres

NONE, Lac La Biche, Alberta

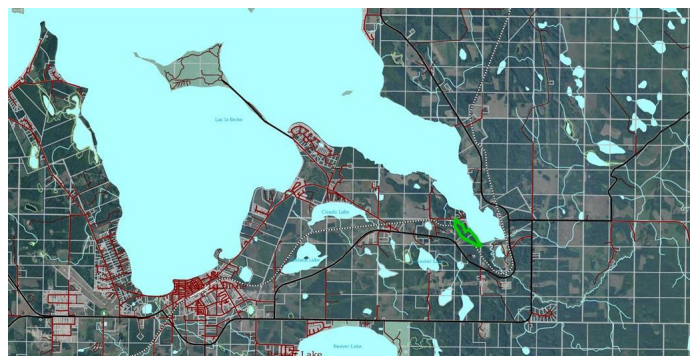
Here's a chance to own your own piece of Paradise. This 55.48 parcel of land on Lac La Biche lake with a 10 minute commute to Lac La Biche. The property is mostly treed with access by a county road and with nearly 2000 feet of lakefront in Big Bay. You'll enjoy the privacy along with the wildlife that already inhabit the property as well witness the seasonal changes of the migratory birds that fly through the area. Lac La Biche is a popular destination for the fishing on numerous lake with close proximity to Lakeland Provincial Park as well as 10's of thousands of square miles of crown recreational land. Lac La Biche lake is also a premiere lake for Walleye fishing and is great lake for exploring by boat or a quiet paddle in a kayak or canoe.

Essential Information

MLS® #	A2143218
Price	\$375,000
Bathrooms	0.00
Acres	55.48
Type	Land
Sub-Type	Residential Land
Status	Active

Community Information

Address 105, 103037 Twp Rd 672



Subdivision	NONE
City	Lac La Biche
County	Lac La Biche County
Province	Alberta
Postal Code	T0A 2C2

Amenities

Utilities	Electricity Available, Natural Gas Available
Is Waterfront	Yes
Waterfront	Creek, Lagoon, Lake, Waterfront

Additional Information

Date Listed	June 19th, 2024
Days on Market	296
Zoning	Agricultural

Listing Details

Listing Office	RE/MAX LA BICHE REALTY
----------------	------------------------

Data is supplied by Pillar 9â„¢ MLSÂ® System. Pillar 9â„¢ is the owner of the copyright in its MLSÂ® System. Data is deemed reliable but is not guaranteed accurate by Pillar 9â„¢. The trademarks MLSÂ®, Multiple Listing ServiceÂ® and the associated logos are owned by The Canadian Real Estate Association (CREA) and identify the quality of services provided by real estate professionals who are members of CREA. Used under license.