

# \$100,000 - M.d. Of Rocky View 7410080, Rural Rocky View County

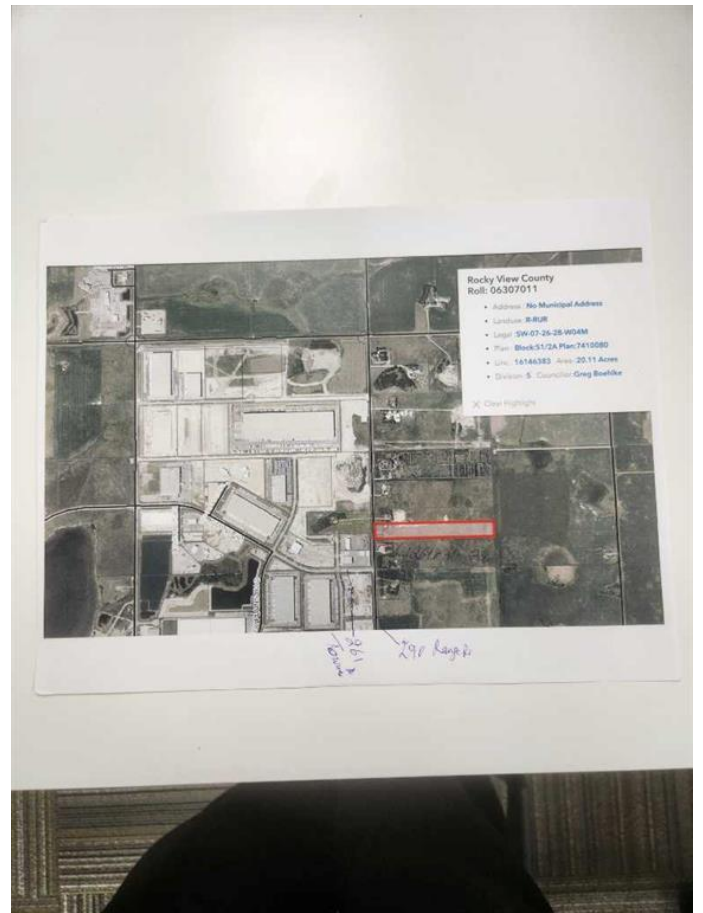
MLS® #A2088827

**\$100,000**

0 Bedroom, 0.00 Bathroom,  
Land on 20.11 Acres

NONE, Rural Rocky View County, Alberta

IT IS 1/80 UNDIVIDED INTEREST IN THE LAND OF 20 ACRES SO TOTAL LAND IS 20 ACRES AND TOTAL SHARE HOLDERS ARE 80. ONLY ONE SHARE IS FOR SALE SO YOU ARE BUYING 1/4 ACRES OF LAND. LAND IS LOCATED VERY CLOSE TO TOWNSHIP RD 261 AND RANGE RD 290. JUST SOUTH OF THE OFFICE OF ROCKY VIEW COUNTY GOVERNMENT OFFICE.



## Essential Information

MLS® #	A2088827
Price	\$100,000
Bathrooms	0.00
Acres	20.11
Type	Land
Sub-Type	Industrial Land
Status	Active

## Community Information

Address	M.d. Of Rocky View 7410080
Subdivision	NONE
City	Rural Rocky View County
County	Rocky View County
Province	Alberta
Postal Code	T0M 0E0

## Additional Information

Date Listed            October 20th, 2023

Days on Market      536

Zoning                r-rur

## **Listing Details**

Listing Office        Royal LePage METRO

Data is supplied by Pillar 9â,,ç MLSÂ® System. Pillar 9â,,ç is the owner of the copyright in its MLSÂ® System. Data is deemed reliable but is not guaranteed accurate by Pillar 9â,,ç. The trademarks MLSÂ®, Multiple Listing ServiceÂ® and the associated logos are owned by The Canadian Real Estate Association (CREA) and identify the quality of services provided by real estate professionals who are members of CREA. Used under license.