

\$185,000 - 1.33 Acres Rr 113a, Rural Forty Mile No. 8, County of

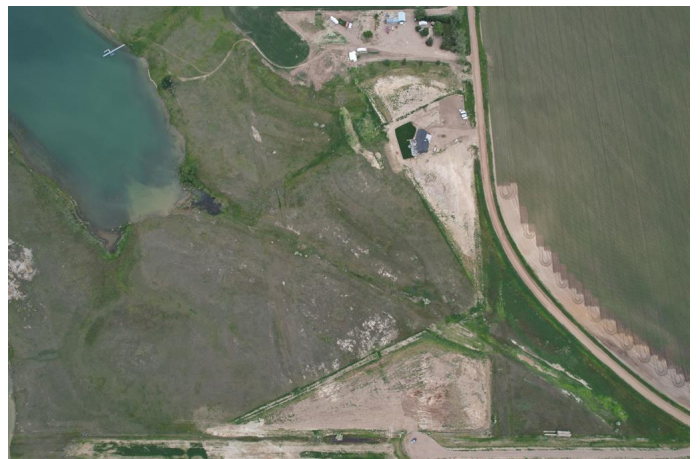
MLS® #A1202503

\$185,000

0 Bedroom, 0.00 Bathroom,
Land on 1.33 Acres

NONE, Rural Forty Mile No. 8, County of,
Alberta

What an opportunity to build your dream. These lake front lots have the size to build a great retreat or permanent home along 40 Mile Dam. Just steps away from the 40 Mile Park. Saint Mary's River Irrigation District has the lease from the waterline up to the property line so you can walk down to the lake. However these lots do not extend to the water. You will need to talk to SMRID regarding a dock if you would like. There is a water CO-OP on these lots that you must join for \$18,000. This will be irrigation water so you can water your lawns. The owners are willing to do vendor financing at 5% interest over 15 years if you are interested.



Essential Information

MLS® #	A1202503
Price	\$185,000
Bathrooms	0.00
Acres	1.33
Type	Land
Sub-Type	Residential Land
Status	Active

Community Information

Address	1.33 Acres Rr 113a
Subdivision	NONE

City	Rural Forty Mile No. 8, County of
County	Forty Mile No. 8, County of
Province	Alberta
Postal Code	T0K 0X0

Additional Information

Date Listed	April 5th, 2022
Days on Market	1095
Zoning	RS

Listing Details

Listing Office	RE/MAX REAL ESTATE - LETHBRIDGE
----------------	---------------------------------

Data is supplied by Pillar 9â„¢ MLSÂ© System. Pillar 9â„¢ is the owner of the copyright in its MLSÂ© System. Data is deemed reliable but is not guaranteed accurate by Pillar 9â„¢. The trademarks MLSÂ©, Multiple Listing ServiceÂ© and the associated logos are owned by The Canadian Real Estate Association (CREA) and identify the quality of services provided by real estate professionals who are members of CREA. Used under license.